

novoferm®

REV.02.2010.EN

novoferm®

NOVOFERM SCHIEVANO s.r.l.
35012 Camposampiero
Padova (Italy)
Via A. Volta, 1

Tel. +39 049 9315111
Fax +39 049 9301877

export@novoferm.it
www.novoferm.it

Authorised Novoferm dealer:

REV.02.2010.EN

Door
Glazed
Sliding

FIRE PROOF TECHNICAL CATALOGUE

Elite blind doors

"Elite" REI 60-90-120 - metal

One leaf door	2
Two leaves door	4
Door with glazing	6

"Elite" door with laminate

One leaf door	8
Two leaves door	9

"Elite" - AA acoustic door

	10
--	----

"Scudo" with wood covering

One leaf door	12
Two leaves door	14

Standard equipment	16
--------------------	----

Accessories	18
-------------	----

Mounting system	20
-----------------	----

« H » system	23
--------------	----

Glazed doors

"StahlGlass" REI 30-60 e RE 120

One leaf glazed door	24
Two leaves glazed door	26
Complex glazed doors	28
Fixed glazed door	30

"NovoGlass" REI 30-60-120

One leaf glazed door	32
Two leaves glazed door	34
Complex glazed doors	36

"AluStahl" REI 120

One leaf glazed door	38
Two leaves glazed door	40
Complex glazed doors	42

"Fixglass" Rei 90 - Rei 120

Standard equipment	46
Accessories	47

Sliding doors

Magnum door

Vertical sliding door

"Sliding" REI 120

One leaf sliding door	48
Two leaves sliding door	50
Two leaves one side sliding door	52
Pass Door	54

Working Scheme	56
----------------	----

Accessories	57
-------------	----

"Magnum" REI 120

Mounting behind the opening	58
-----------------------------	----

Mounting in the opening	60
-------------------------	----

"Vertical Sliding Door" REI 120

	62
--	----

Orders Form	64
-------------	----

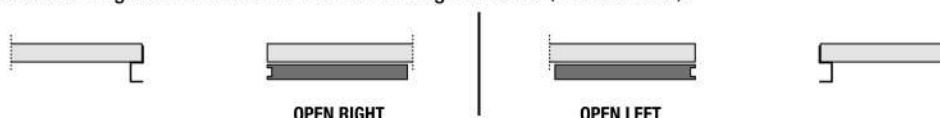
GLOSSARY

LM / LFM	Wall size width or inside pre frame	LI	Max frame width	LM X HM	STRUCTURAL WALL SIZE OR ORDER SIZE
HP	Height passage	LNP	Light net passage	LT X HT	EXTERNAL FRAME SIZE
HT	External frame height	LF	Structural wall width	LN X HN	NOMINAL SIZE
LP	Width passage	HF	Structural wall height	LP X HP	LIGHT PASSAGE SIZE
LT	External frame width	HNV	Net height glass		
HM	Wall height	LNV	Net light glass		
HI	Max frame height				

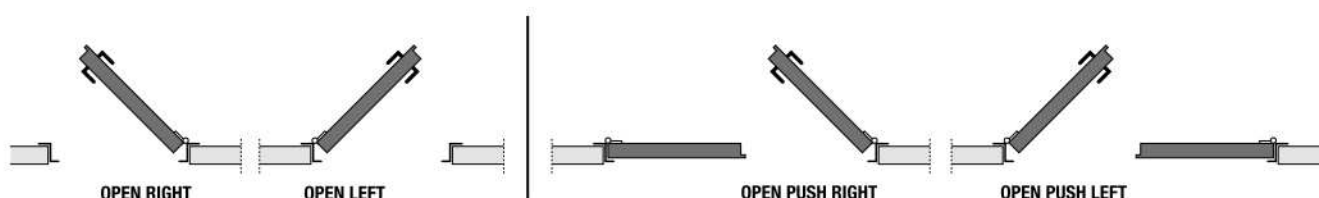


OPENING SYSTEM:

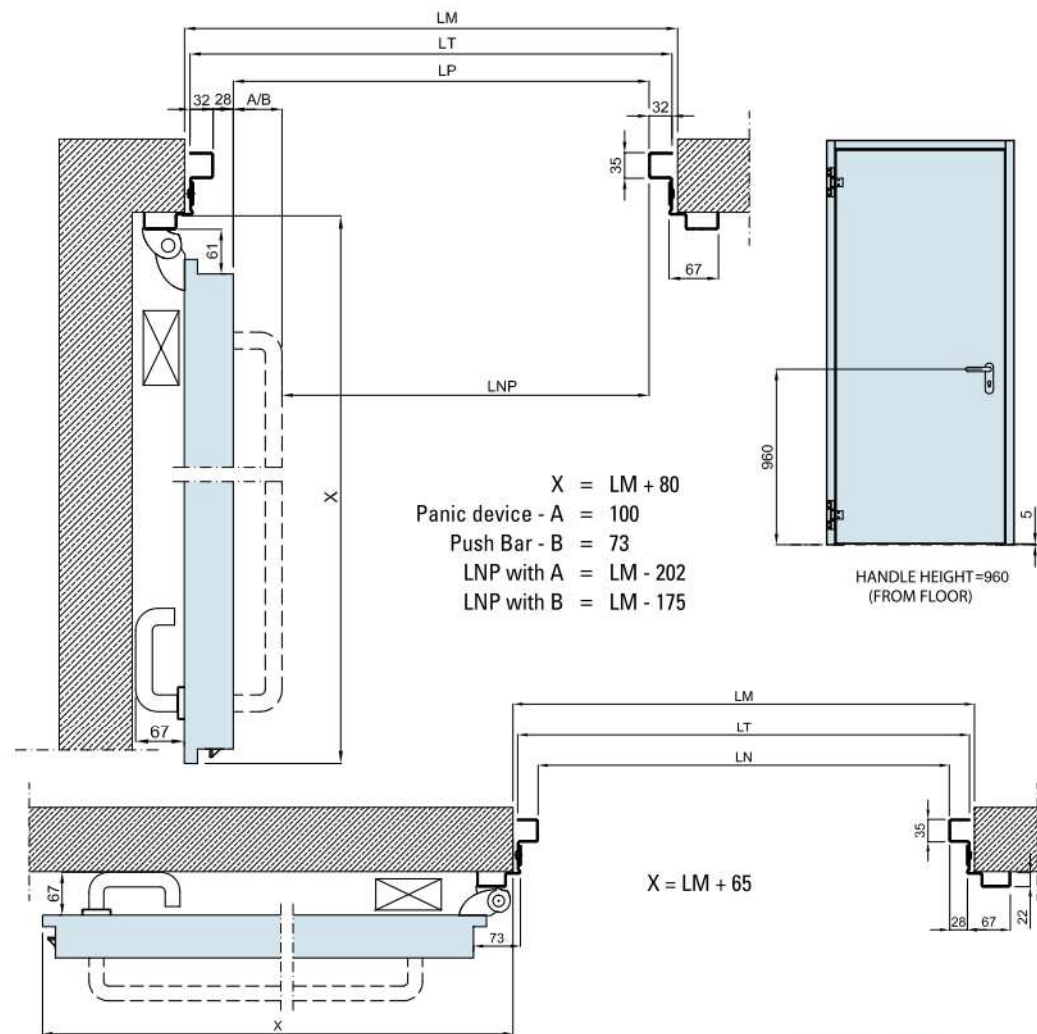
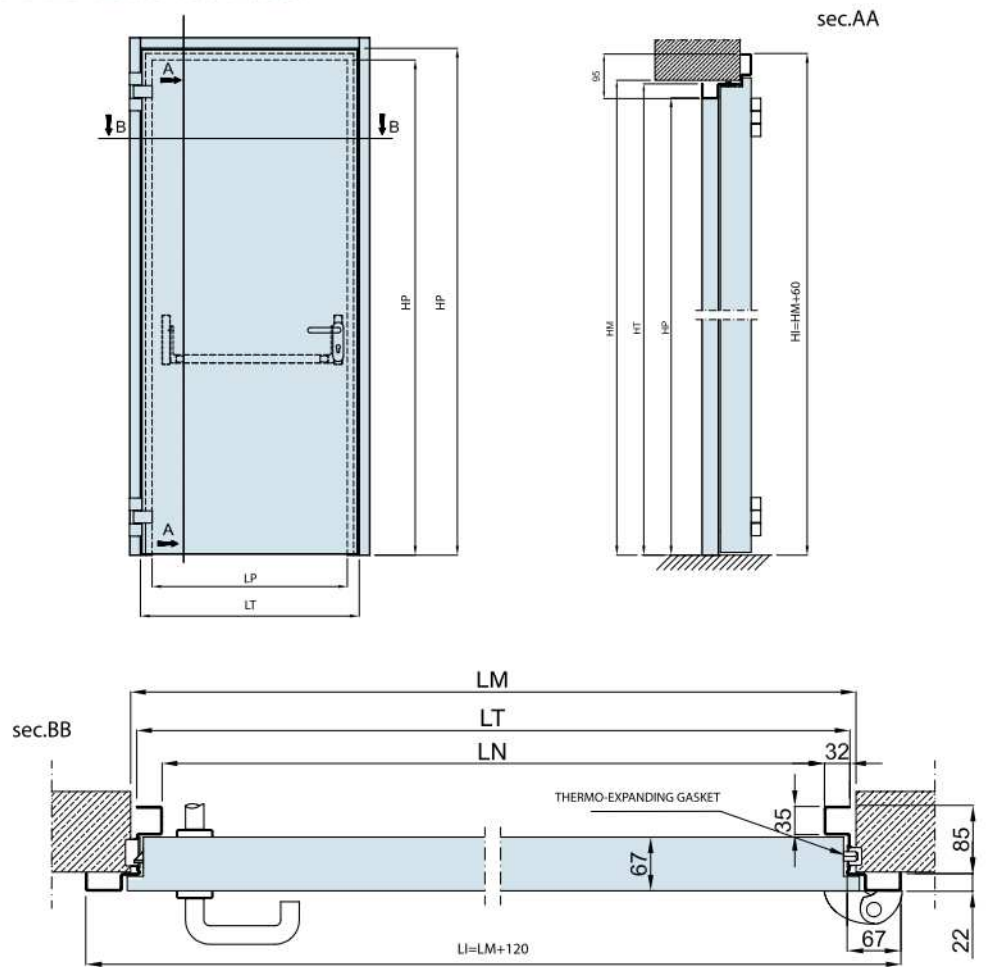
The opening side for Sliding door is determined from the guide side (inside view).



The opening side for leaf door is considered by pushing the door.



ELITE One leaf door



Fire proof door Elite, Metal, REI 60, REI 120 constituted by:

- Frame in galvanized steel, thickness mm. 15/10 "Z" profiled, conformed to allow coplanarity of leaf-frame, with room for insertion of intumescent strip, prearranged with steel strips for mounting on wall angles or holes for fixing on concrete. The connection between frame and corners occur through an unique system of joint, that first of all ensure excellent rigidity, than it avoid usual corrosion of welding.
- Leaf composed by double layer galvanized steel mm. 9/ 10, press-formed, welded, with high density insulating package inside, protected in lock zone with two layers of calcium sulphite based material.
- Nr. 2 hinges each leaf, made in sinterized steel, with sliding on two steel roller bearings, oversized for intensive usage in condition of heavy loads. Their construction allows the adjusting of the leaf position in every moment by means of special screws, normally hidden by plastic cups.
- Fireproof lock type "flush button" on secondary leaf
- Black arm selector closing (metal door excluded).
- Fireproof lock type "Patent" with cylinder and three keys
- PVC black handle with inside steel armour, "U" shaped for accidental grips.
- Thermo-expanding gasket around perimeter of the door (only for REI doors, Metal excluded).
- Superficial finishing with powder colour RAL 7035 (brushed).
- The particular construction of the door permits a perfect alignment between leaf and frame, furthermore 19 mm. thick rebated minimizes accident risks in case of contact with person.
- Standard handle height is mm. 950 from the floor, different height on request.
- Certification range covers all ordinary type of fixing by mounting

concrete.

- Unless different agreements, door is equipped with following accessories : elements for attachment, fixing and filling for frame compartment (mechanical dowels + strips, clamps, self-tapping screws + strips, screws + strips for plasterboard kit).

(*) AS SPECIFIED IN THE ITALIAN LAW DLT 19/09/04 - 626 AND REVISIONS. STANDARD DOORS ARE NOT REVERSIBLE. WE NEED THE OPENING SIDE. * PS: SIZES ARE EXPRESSED IN MM.

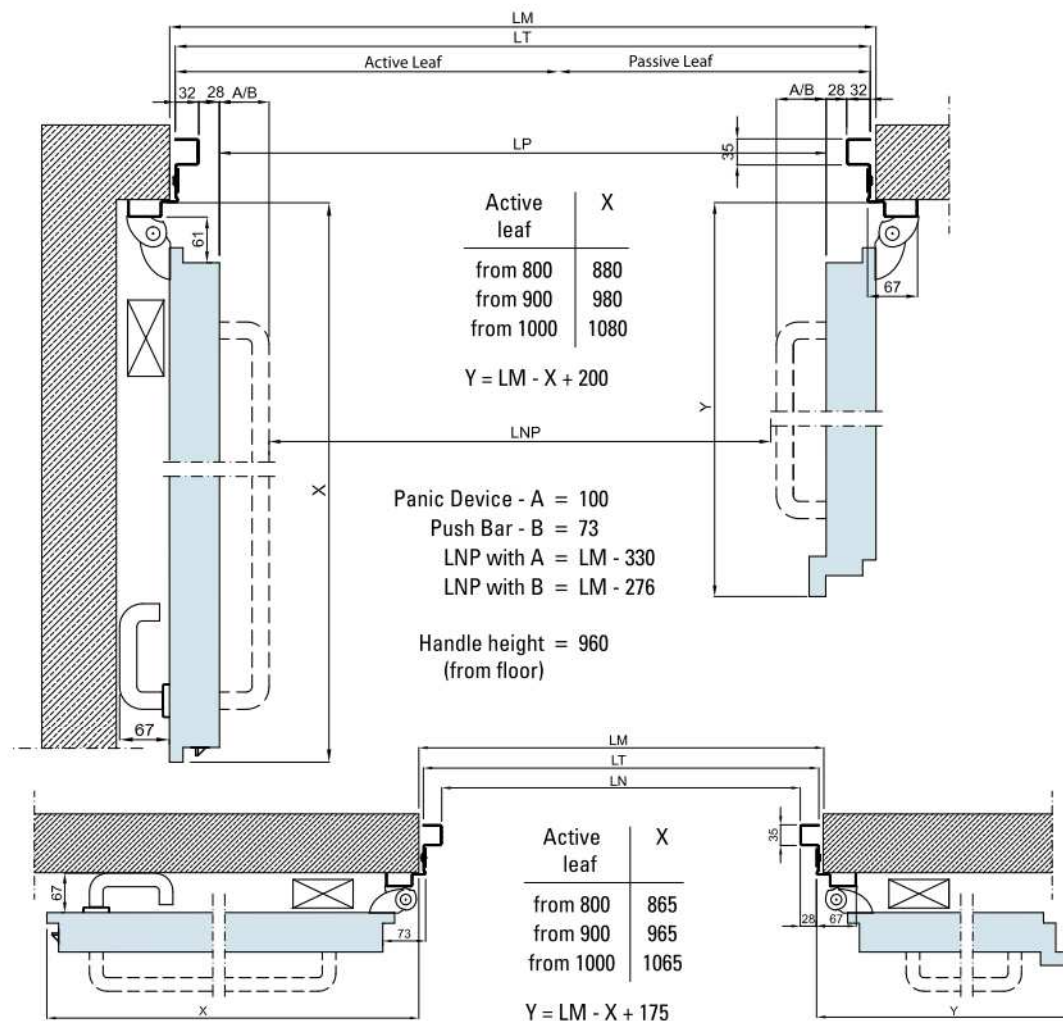
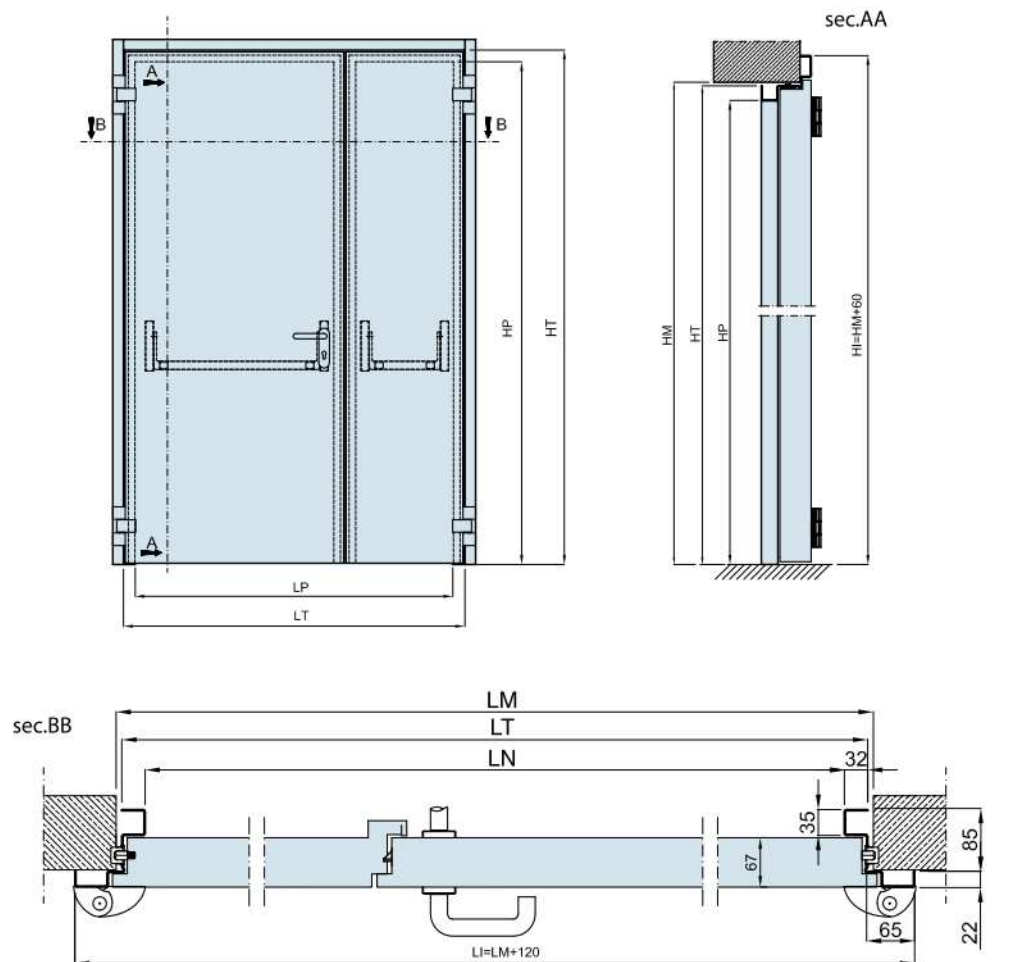
STANDARD DOOR H= 2050

STRUCTURAL WALL SIZE ORDER SIZE (LMxHM)	EXTERNAL FRAME (LT x HT)	NOMINAL SIZE (LN x HN)	LIGHT PASSAGE CLEAR WIDTH (LP x HP) *
800 x 2050	790 x 2045	726 x 2013	698 x 2013
900 x 2050	890 x 2045	826 x 2013	798 x 2013
1000 x 2050	990 x 2045	926 x 2013	898 x 2013
1250 x 2050	1240 x 2045	1176 x 2013	1148 x 2013
1350 x 2050	1340 x 2045	1276 x 2013	1248 x 2013

STANDARD DOOR H= 2150

800 x 2150	790 x 2145	726 x 2113	698 x 2113
900 x 2150	890 x 2145	826 x 2113	798 x 2113
1000 x 2150	990 x 2145	926 x 2113	898 x 2113
1250 x 2150	1240 x 2145	1176 x 2113	1148 x 2113
1350 x 2150	1340 x 2145	1276 x 2113	1248 x 2113

ELITE Two leaves door



Fire proof door Elite, Metal, REI 60, REI 90, REI 120 constituted by:

- Frame in galvanized steel, thickness mm. 15/10 "Z" profiled, conformed to allow coplanarity of leaf-frame, with room for insertion of intumescent strip, prearranged with steel strips for mounting on wall angles or holes for fixing on concrete.
- The connection between frame and corners occur through an unique system of joint, that first of all ensure excellent rigidity, than it avoid usual corrosion of welding.
- Nr. 2 hinges each leaf, made in sinterized steel, with sliding on two steel roller bearings, oversized for intensive usage in condition of heavy loads. Their construction allows the adjusting of the leaf position in every moment by means of special screws, normally hidden by plastic cups.
- Self closing mechanism by means of springs contained in the hinges, adjustable and invisible outside.
- Fixed rostrum placed between the hinges.
- Fireproof lock type "Patent" with cylinder and three keys.
- Fireproof lock type "flush bolt" on secondary leaf.
- Black arm closing selector (metal door excluded).
- Braccetto selettore di chiusura colore nero (escluso su porte Metal Elite).
- PVC black handle with inside steel armour, "U" shaped for accidental grips
- Thermo-expanding gasket around perimeter of the door (only for REI doors, Metal excluded).
- Superficial finishing with powder colour RAL 7035 (brushed).
- The particular construction of the door permits a perfect alignment between leaf and frame, furthermore 19 mm. thick rebated minimizes accident risks in case of contact with person. Standard handle height is mm. 950 from the floor, different height on request
- Certification range covers all ordinary type of fixing: by mounting the door in case of metal pre-frame, carton gypsum and dowels on concrete.
- Unless different agreements, door is equipped with following

accessories : elements for attachment, fixing and filling for frame compartment (mechanical dowels + strips, clamps, self-tapping screws + strips, screws + strips for plasterboard kit).

* AS SPECIFIED IN THE ITALIAN LAW DLT 19/09/04 - 626 AND REVISIONS. STANDARD DOORS ARE NOT REVERSIBLE. WE NEED THE OPENING SIDE. * PS: SIZES ARE EXPRESSED IN MM.

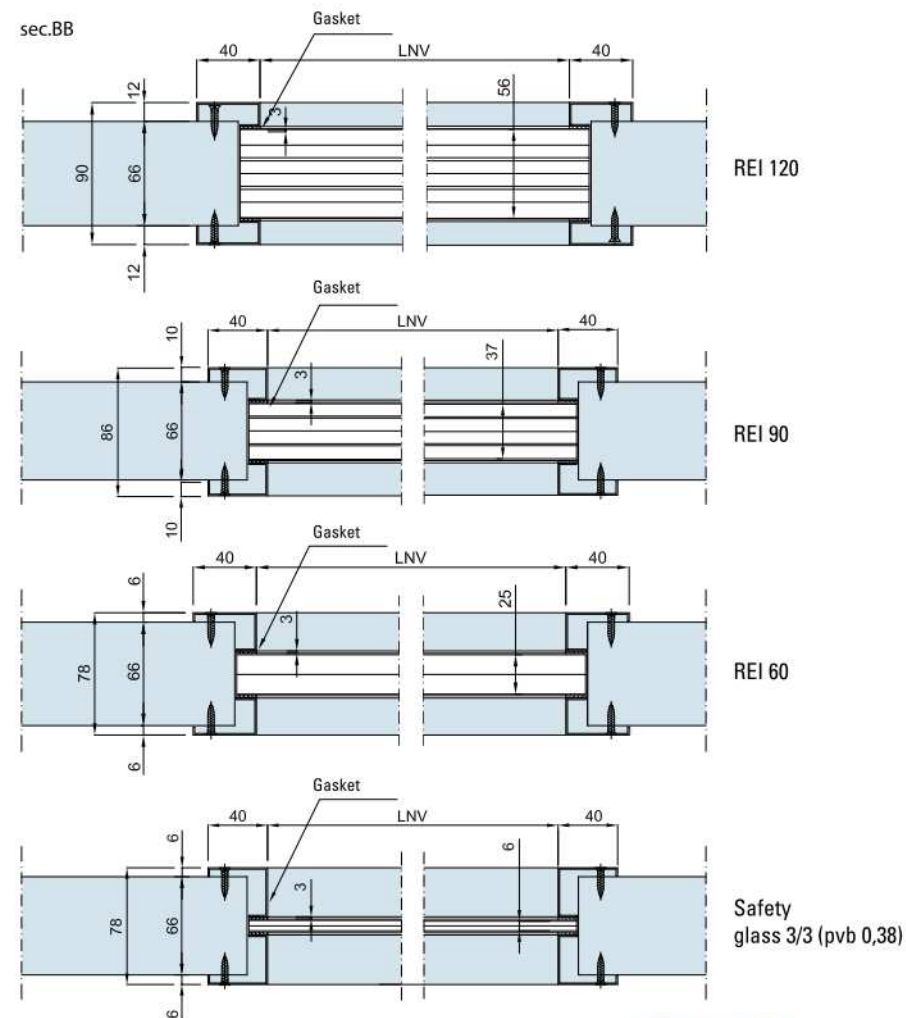
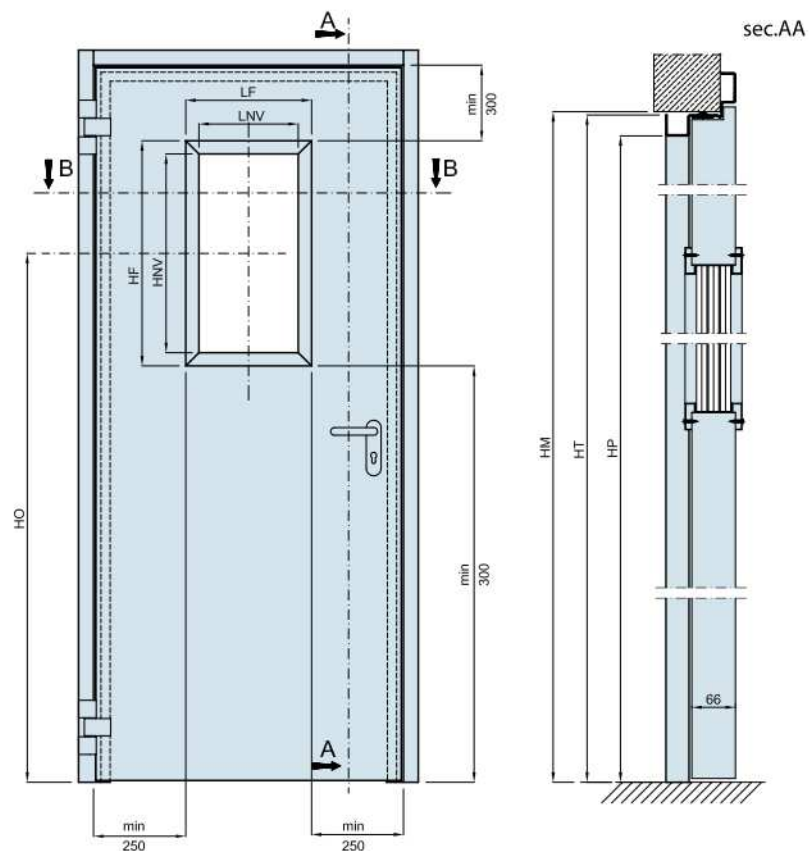
STANDARD DOORS 2 LEAVES H = 2050 REI 60

STRUCTURAL WALL SIZE ORDER SIZE (LMxHM)	EXTERNAL FRAME SIZE (LT x HT)	NOMINAL SIZE (LN x HN)	LIGHT PASSAGE SIZE (LP x HP)
1250 x 2050 (800 + 450)	1240 x 2045	1179 x 2013	1120 x 2013
1350 x 2050 (900 + 450)	1340 x 2045	1276 x 2013	1220 x 2013
1450 x 2050 (1000 + 450)	1440 x 2045	1376 x 2013	1320 x 2013
1600 x 2050 (800 + 800)	1590 x 2045	1526 x 2013	1470 x 2013
1800 x 2050 (1000 + 800)	1790 x 2045	1726 x 2013	1670 x 2013
2000 x 2050 (1000 + 1000)	1990 x 2045	1926 x 2013	1870 x 2013

STANDARD DOORS 2 LEAVES H = 2150

STRUCTURAL WALL SIZE ORDER SIZE (LMxHM)	EXTERNAL FRAME SIZE (LT x HT)	NOMINAL SIZE (LN x HN)	LIGHT PASSAGE SIZE (LP x HP)
1250 x 2150 (800 + 450)	1240 x 2145	1179 x 2113	1120 x 2113
1350 x 2150 (900 + 450)	1340 x 2145	1276 x 2113	1220 x 2113
1450 x 2150 (1000 + 450)	1440 x 2145	1376 x 2113	1320 x 2113
1600 x 2150 (800 + 800)	1590 x 2145	1526 x 2113	1470 x 2113
1800 x 2150 (1000 + 800)	1790 x 2145	1726 x 2113	1670 x 2113
2000 x 2150 (1000 + 1000)	1990 x 2145	1926 x 2113	1870 x 2113

ELITE Door with glazing



novoferm

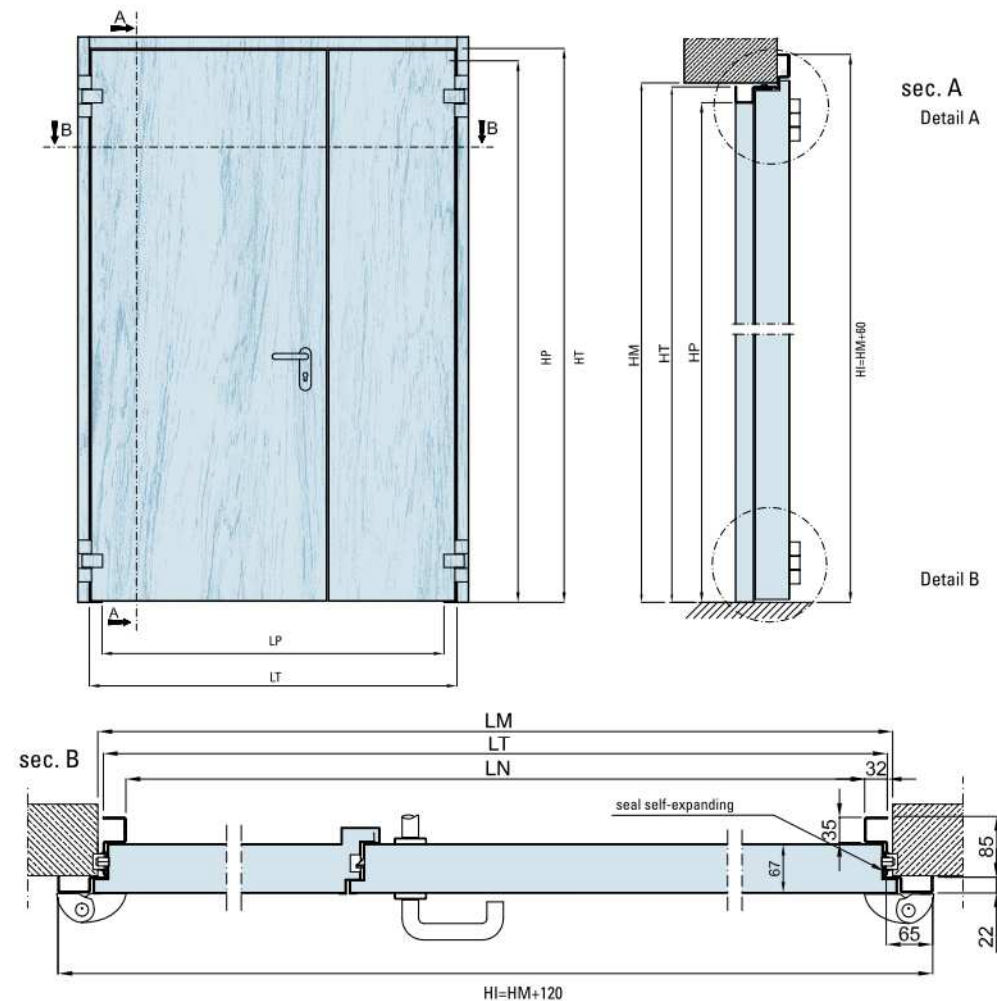
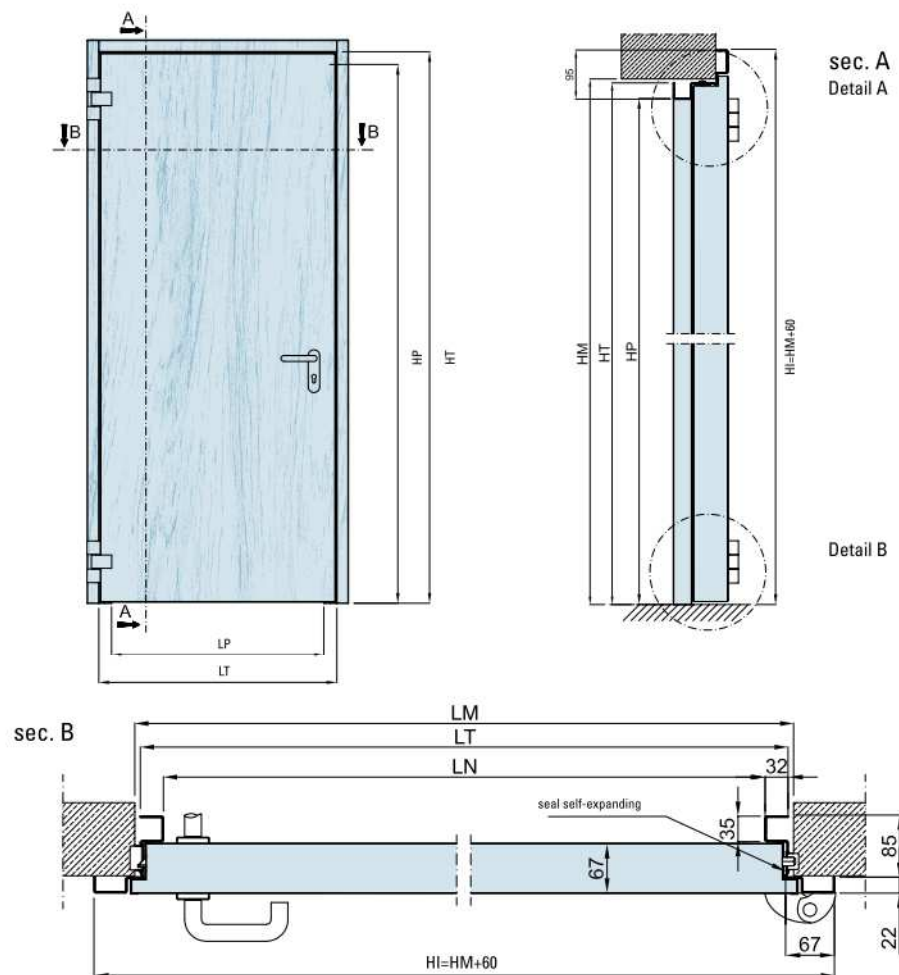
- NOTE:**
- On request it's possible to mount a rectangular or circular glazing window on the leaf.
 - The glasses are tested to be fire proof, composed by multiple stratum of float glass and special transparent gel which, subjected to the action of the flame develops an opaque insulating foam.
 - Glasses are fixed by metal profiles clipped on hidden screws, rubber gasket which avoid the growth of the glass at high temperature.
 - We provide standard and, on request, special sizes.
 - For frequent usage and in case of glass bigger than mm. 300*400 we recommend the door closer.
 - We deliver door with glass pre-mounted.
 - Fire glass deteriorates if exposed to direct sunlight or in contact with water.
 - Glass could have micro bubbles, which are not questionable if invisible at more than 3 meters.

STANDARD GLAZING

GLAZING MIDDLE SIZE HEIGHT (HO)	GLAZING SIZE (B nomin. + H nomin.)	NET LIGHT GLAZING SIZE (LNV x HNV)	EXTERNAL PROFILE SIZE (LF x HF)
1600	300 x 400	270 x 370	350 x 450
1400	400 x 600	370 x 570	450 x 700
1600	300 Ø	270 Ø	350 Ø
1500	500 Ø	470 Ø	550 Ø

• ATTN: size are express in mm

ELITE With laminate covering



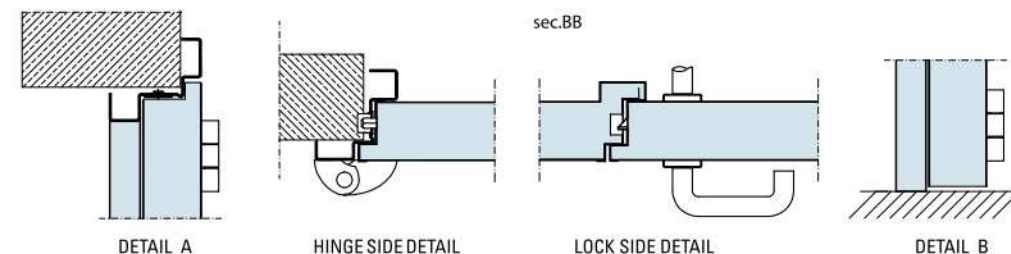
Blind leaf door with laminate covering, constituted by:

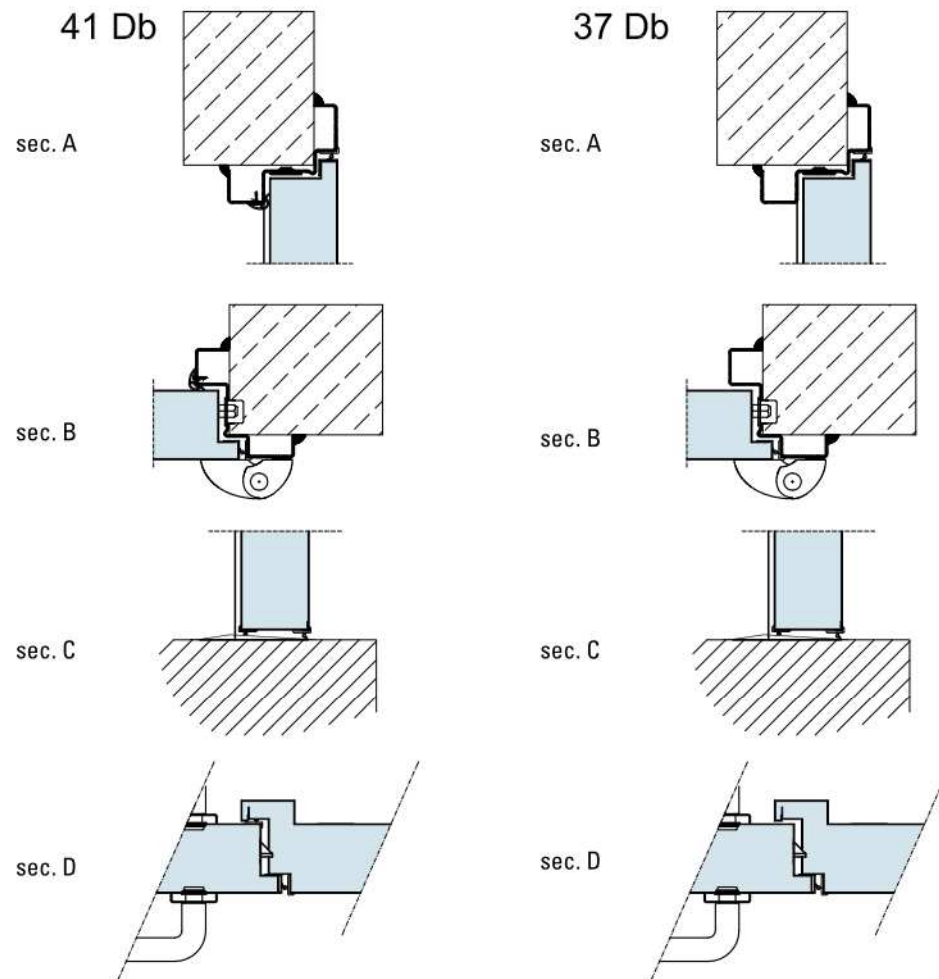
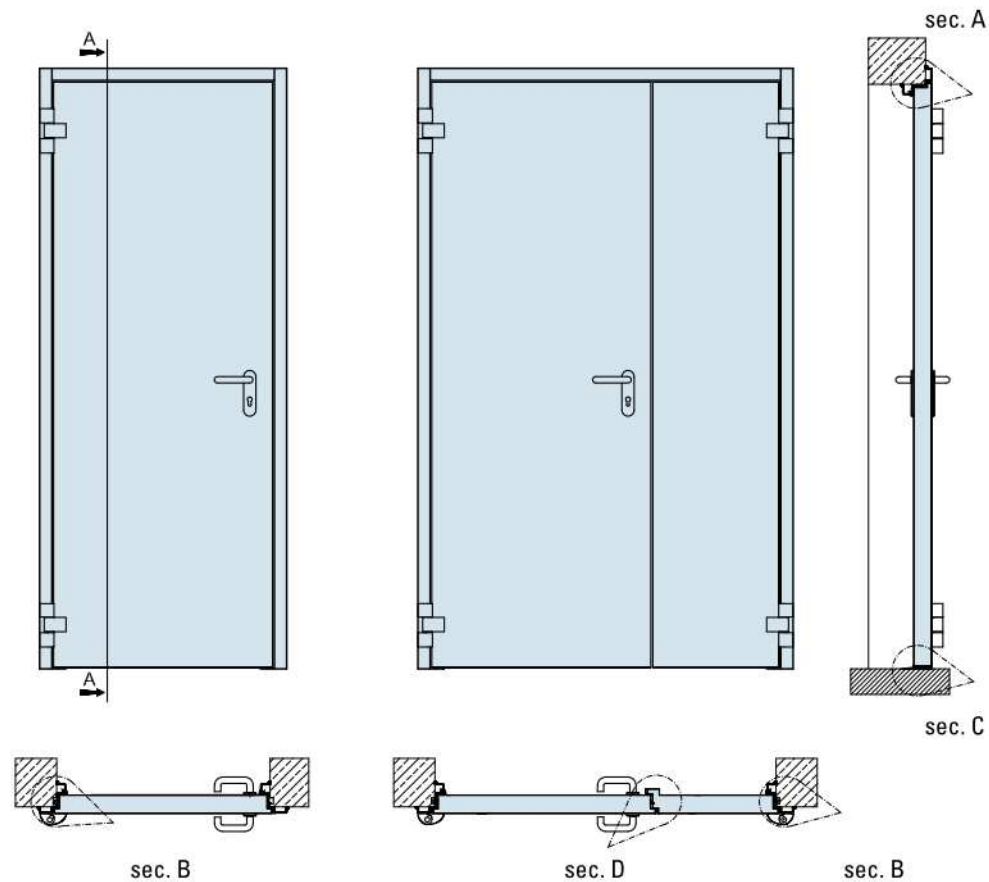
- Frame in galvanized steel, thickness mm. 15/10 "Z" profiled, conformed to allow coplanarity of leaf-frame, with room for insertion of intumescent strip, prearranged with steel strips for mounting on wall angles or holes for fixing on concrete.
- The connection between frame and corners occur through an unique system of joint, that first of all ensure excellent rigidity, than it avoid usual corrosion of welding
- Leaf composed by double layer galvanized steel mm. 9/ 10, press-formed and welded, and laminate covering with finishing as indicated in laminate covering list, finishing perimeter profile.
- Frame and finishing profile with powder colour RAL 8019.
- High density insulating package inside the leaf.
- Nr. 2 hinges each leaf, made in sinterized steel, with sliding on two steel roller bearings, oversized for intensive usage in condition of heavy loads. Their construction allows the adjusting of the leaf

- position in every moment by means of special screws, normally hidden by plastic cups.
- Fixed rostrum placed between the hinges.
- Fireproof lock type "Patent" with cylinder and three keys.
- Fire proof lock type « Flush bolt » on secondary leaf .
- Black arm closing selector (Metal door excluded).
- PVC black handle with inside steel armour, "U" shaped for accidental grips.

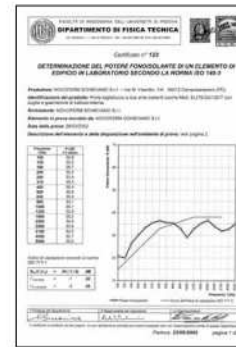
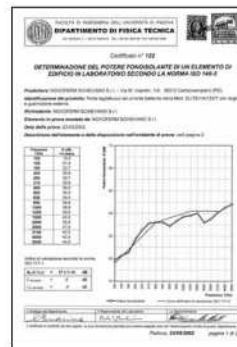
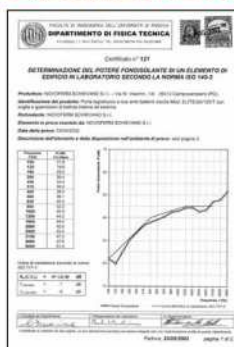
NOTE:

- Consider only special size doors.
- No window glazing inside.
- In accordance to UNI EN 1634, the laminate covering can be applied on REI 60 and REI 120 doors





CERTIFICATIONS FOR ACOUSTIC DOOR

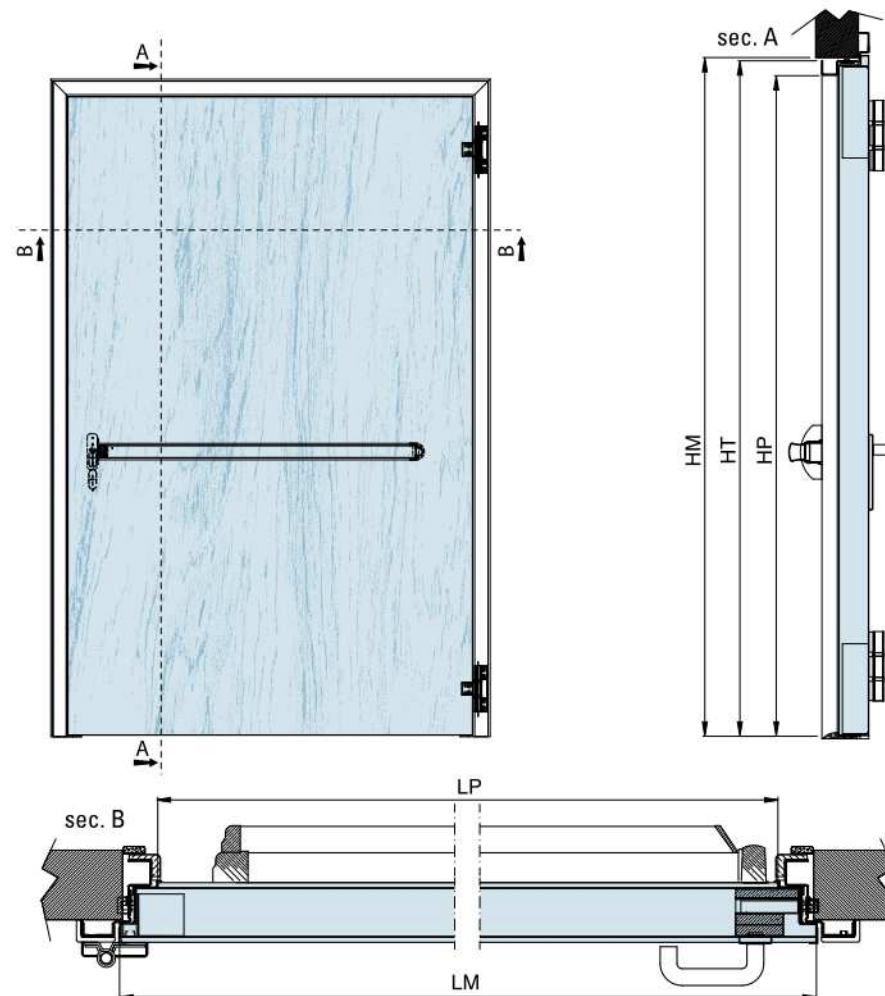
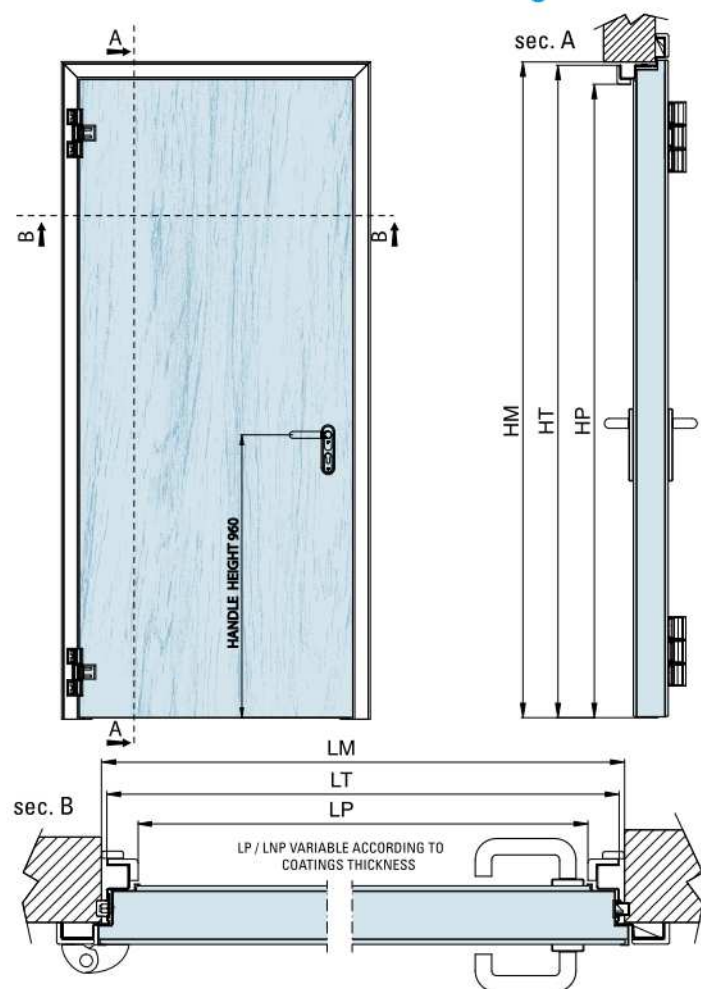


NOTE:

Available only REI 120, special size.
Fixing should be done with careful sealing of any remaining space between masonry and frame.
The acoustic measurement must include an overall analysis of the environment in order to value sound transmission. The inclusion of windows is not recommended.
Values of insulation above 41 dB are achievable with "Scudo" door.
Acoustic door Elite need to install a 100mm. stainless steel floor threshold.

novoferm

SCUDO One leaf door with wood covering REI 120

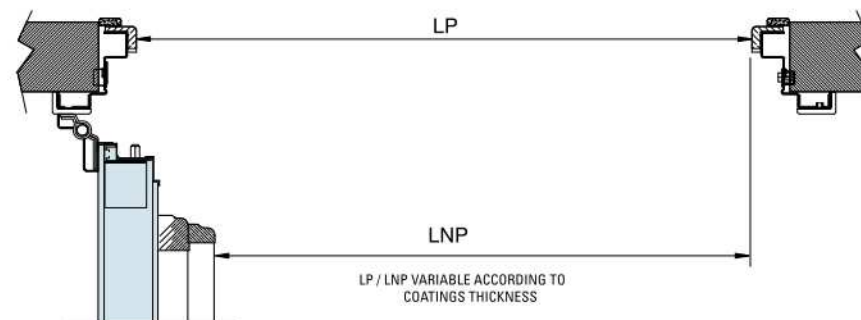


novoferm

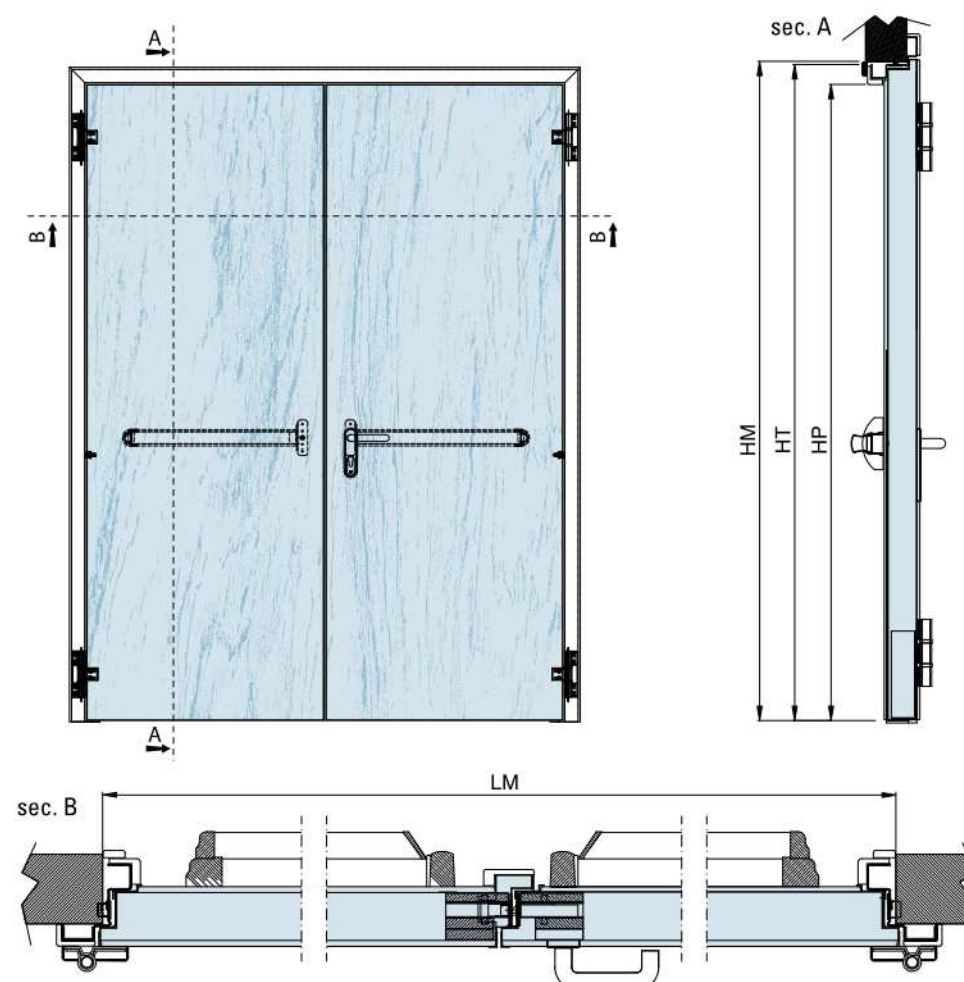
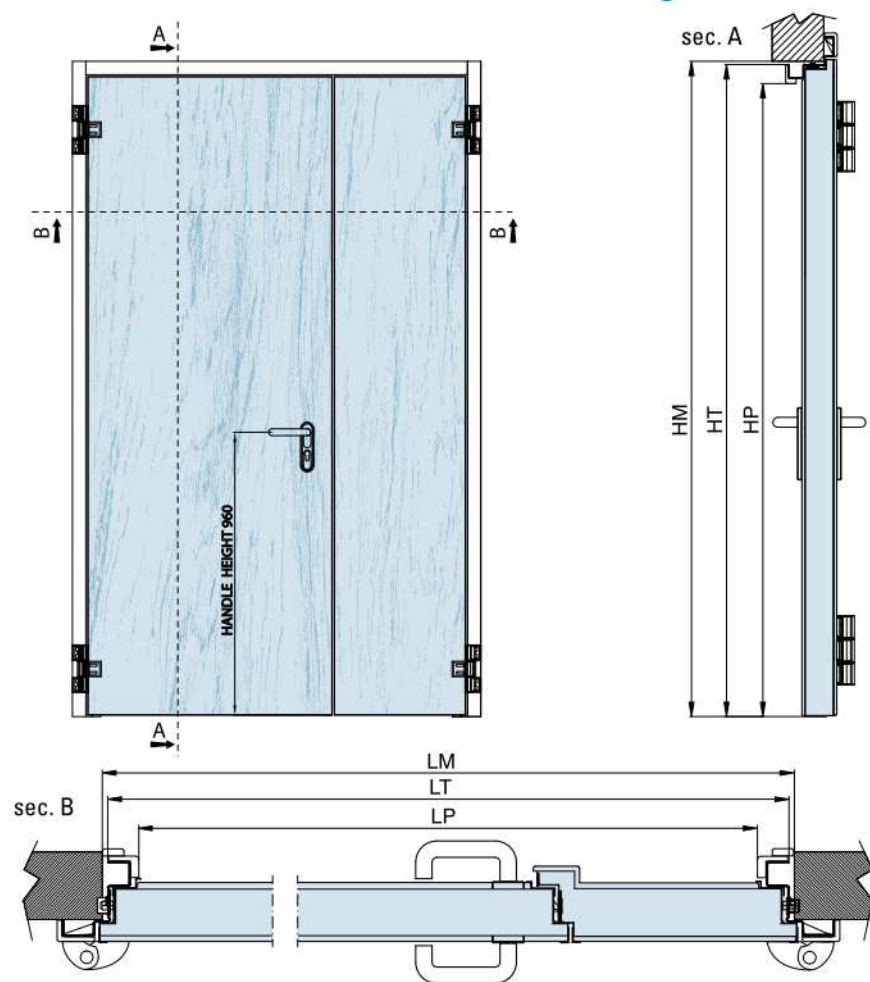
- Door realized with the same technical – constructive features of Elite door (pages 2-3-4-5).
- Leaf-covering made from solid wood or pantographed compound, in different essences and finishes. Fixed on the border by a bended steel profile painted in RAL 8019 or combined with the wood covering chosen.
- Frame and wall covering profile are also coated on request.
- The coatings are made with materials with aqueous base and protective impregnants. Those products guarantee long endurance and a easy maintenance

- Standard handle height is mm. 960 from the floor, different height on request .
- Unless different agreements, door is equipped with following accessories : elements for attachment, fixing and filling for frame compartment (mechanical dowels + strips, clamps, self-tapping screws + strips, screws + strips for plasterboard kit).

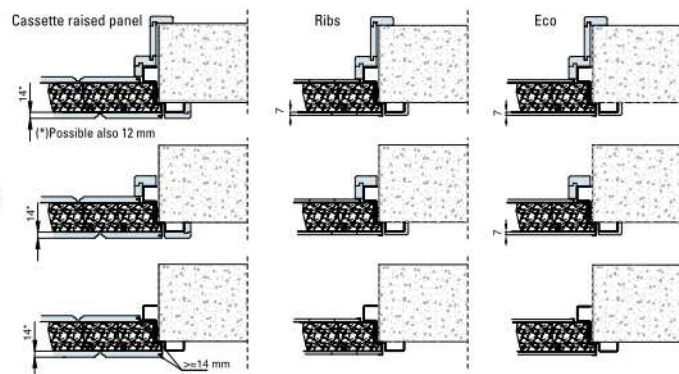
Attn.: It's not possible to install Novopush handle.



SCUDO Two leaves door with wood covering REI 120

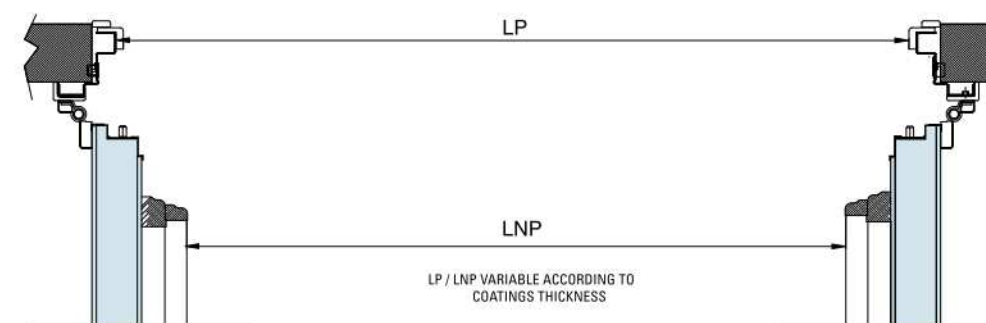


Frame and wall covering



Frame with covering

Frame without covering



ELITE Standard equipment

Hinge



Hinge Eco with 3 sections



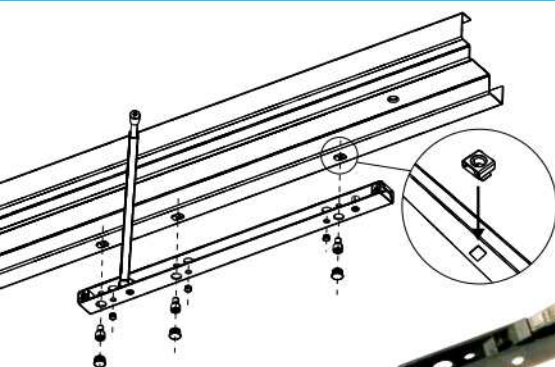
	Colour	Handle	Cover
series	Black	yes	Black
on request	White	yes	White - Ral 9010
	Red	yes	Red - Ral 3003
	Blue	yes	Blue - Ral 5011/5013
	Brown	yes	Brown - Ral 8022
	Grey	yes	Grey - RAL 7030/7038
	Inox		Ral 9006

Nylon handle with plate

Black handle with "U" shape, antigrip.
Cylinder with 3 keys.



	Colour	Handle	Cover
series	Black	yes	Black
on request	White	yes	White - Ral 9010
	Red	yes	Red - Ral 3003
	Blue	yes	Blue - Ral 5011/5013
	Brown	yes	Brown - Ral 8022
	Grey	yes	Grey - RAL 7030/7038
	Inox		Ral 9006

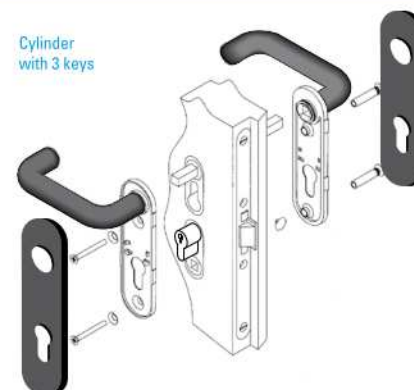


Arm closing selector
For REI 60 - REI 120

Colour available:
- Black
- Grey



Cylinder
with 3 keys



Fixed knob
(on request)



ELITE Accessories

Access Control

The access control is made with three different instruments:

- 1 – Electric handle: possible also on later filling
- 2 – Electric lock: quite invisible, mounted on single and double leaf door.
- 3 – Electric strike: possible only on single leaf door.
- 4 – Magnet with high power



2 – Electric lock

1 – Electric handle

3 – Electric strike

Electromagnets

Electromagnet on leaves composed by external box (white colour) and switch bottom on the top of it.

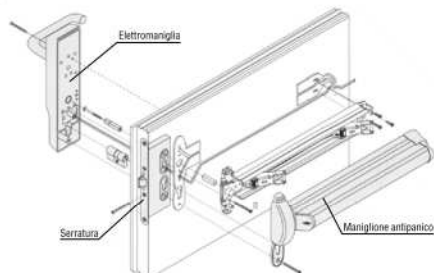
Technical details:
 Voltage 24 V
 Power 1,5 W
 Adhesion power 690 N (60 kg)
 Insertion time 100%
 Working temperature -20 +80C
 Protection IP 40 DIN 40050



Moving plate

Electromagnet with switch bottom

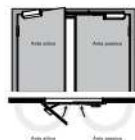
Mounting of electric handle in combination to a lock driven from inside by a panic device.



4 – Magnet 300-600 kg



Door closer for double leaf door with arm closing selector included mod. DORMA TS93 GSR



Door closer

It works through a spring in oil mounted on the mobile leaf. The oil permits a soft closing of the door. The door closer is composed of a double system of speed regulation:

- a) When door opens more than 10°
- b) When door opens less than 10°

Operation by scissor action arm or slide action arm. Covered by a black box.



Scissor action arm

Slide action arm

ELITE Accessories

Panic devices with bar type A



Corbin aluminium bar (A1)
encumbrance mm 100

Cisa red bar
encumbrance mm 100 (A2)

Cisa prestige stainless steel
encumbrance mm 100 (A3)

Panic devices

All panic devices work by a mechanism inside the leaf which permits to open the door also pushing on the secondary leaf only. In case of Scudo doors, it must be checked the working of the panic devices in case of double leaf door of modest width.

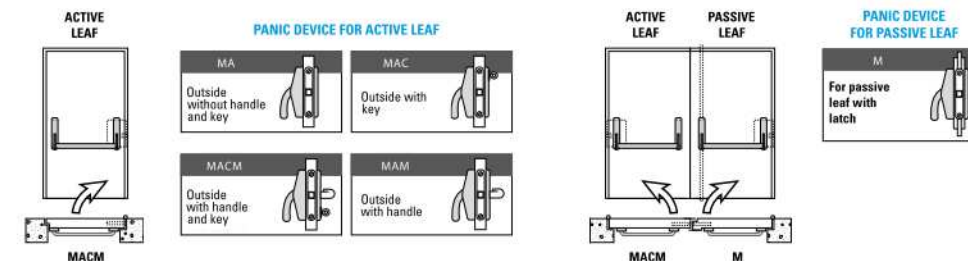
Panic devices Push type B



Novopush similar to stainless steel (B1)
encumbrance mm 73

Novopush black (B2)
encumbrance mm 73

Touch bar Cisa (B3)
encumbrance mm 73



NovoGuard

The NovoGuard panic device with less operating space in the market MM 79

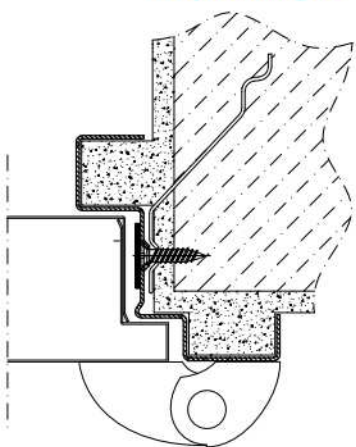


The NovoGuard panic device certified UNI EN 1125, has the less operating space in the market. On request photoluminescent strip high visibility (Novoferm patent). NovoGuard and Novopush completed the exclusive range of panic devices produced directly by Novoferm Schievano, a global reference point for fire proof closures and sectional doors.

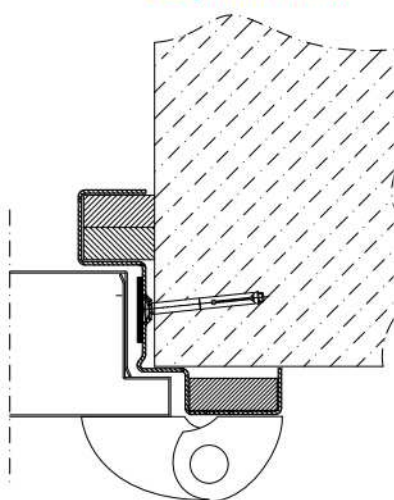
NovoGuard according to European Norm UNI EN1125, with CE mark, working on inside lock. Reversible, compact encumbrance mm. 79 and equipped by aluminium bar with an evicence green central plastic strip which highlights the way of escape (patented). Equipped by a rotation device with lever working on pillow blocks with a minimum working stress (patented). Available in different lengths, simply to shorten, absence of holes and cracks in any position, resistant to corrosion of salt fog. Available with different finishing, with cylinder and handle outside.

ELITE Mounting system REI 60 - 90 - 120

1. By wall angles

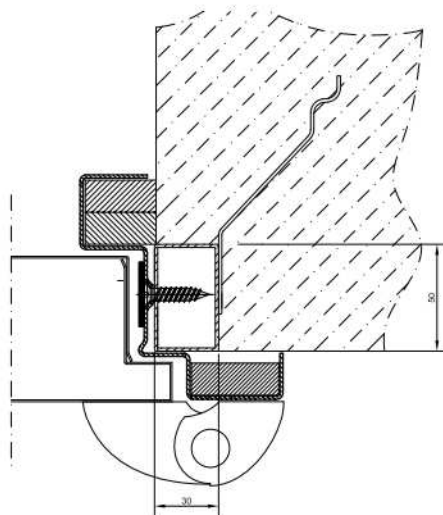


2. By anchor bolts

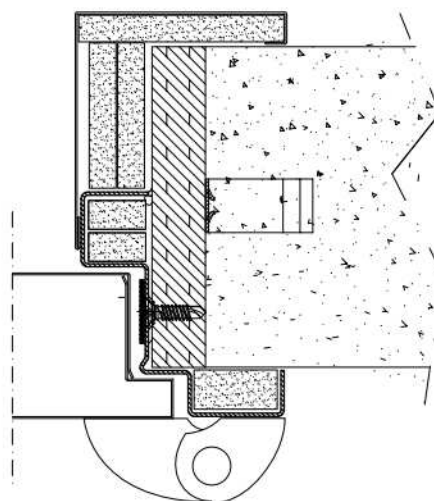


Only in case of
substantial
masonry

3. By counter frame

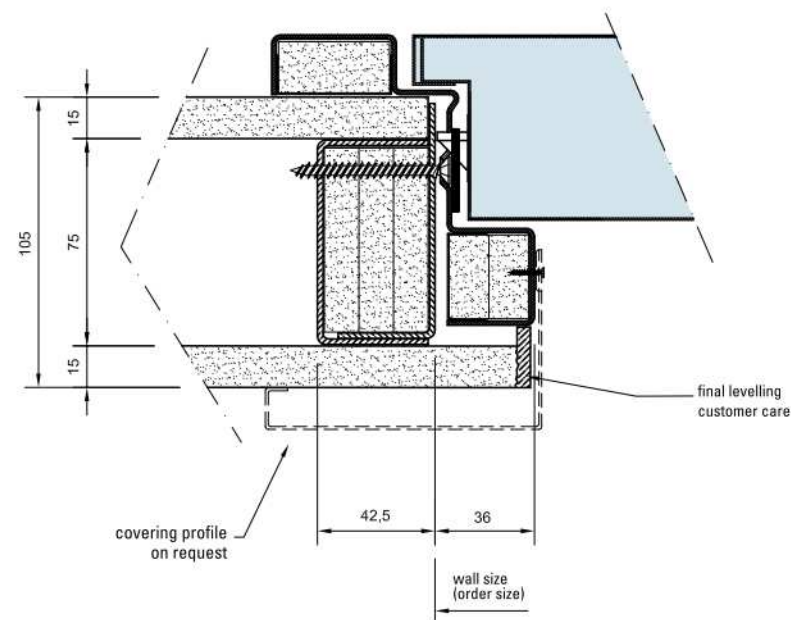


4. By wooden counter frame

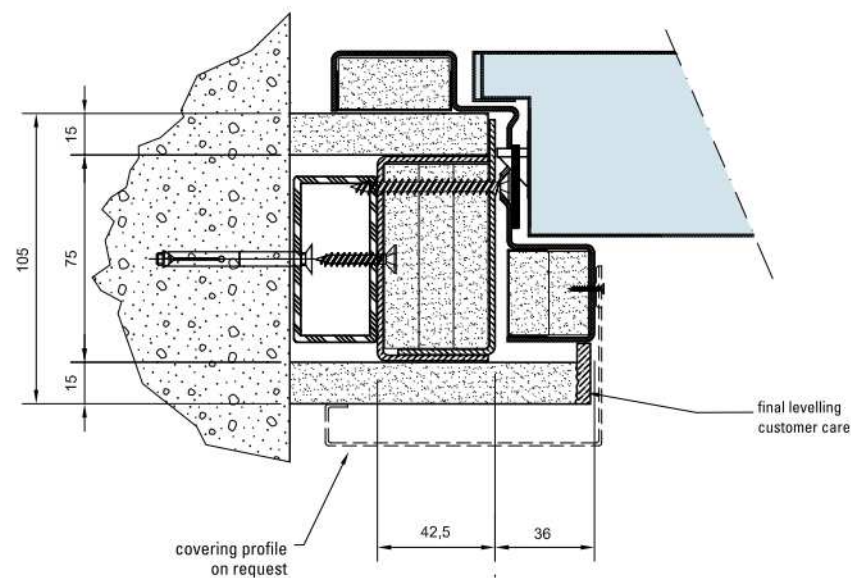


ELITE Mounting system REI 60

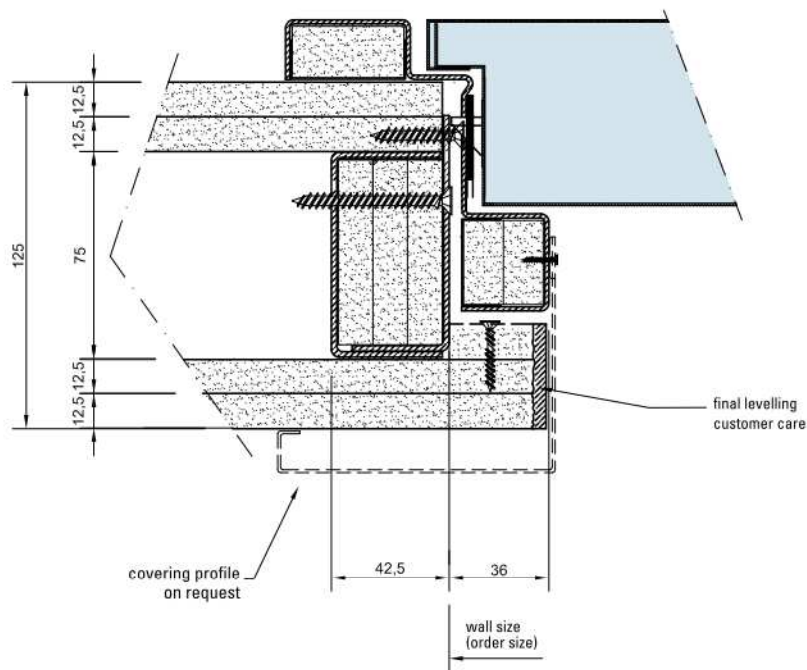
5. Door mounted on gypsum wall (type K2)



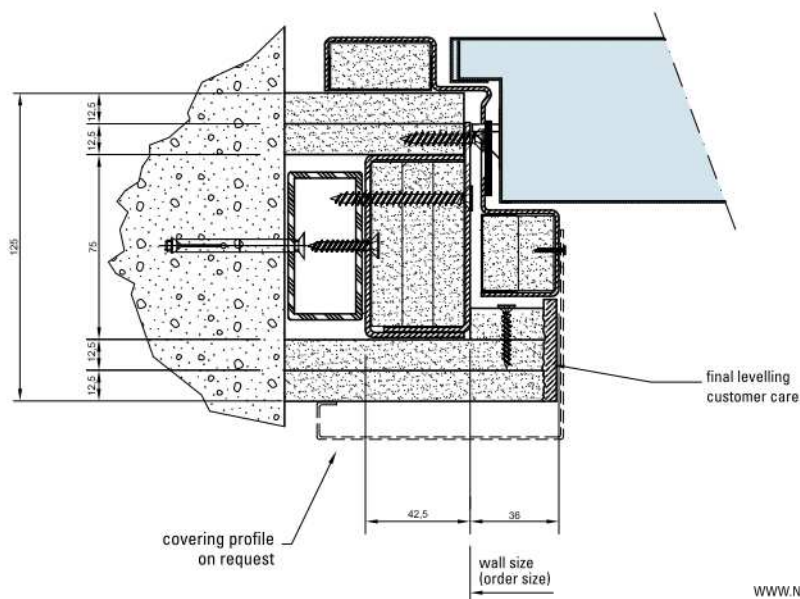
6. Door mounted in the opening (type L)



7. Door mounted on gypsum wall (type K2)

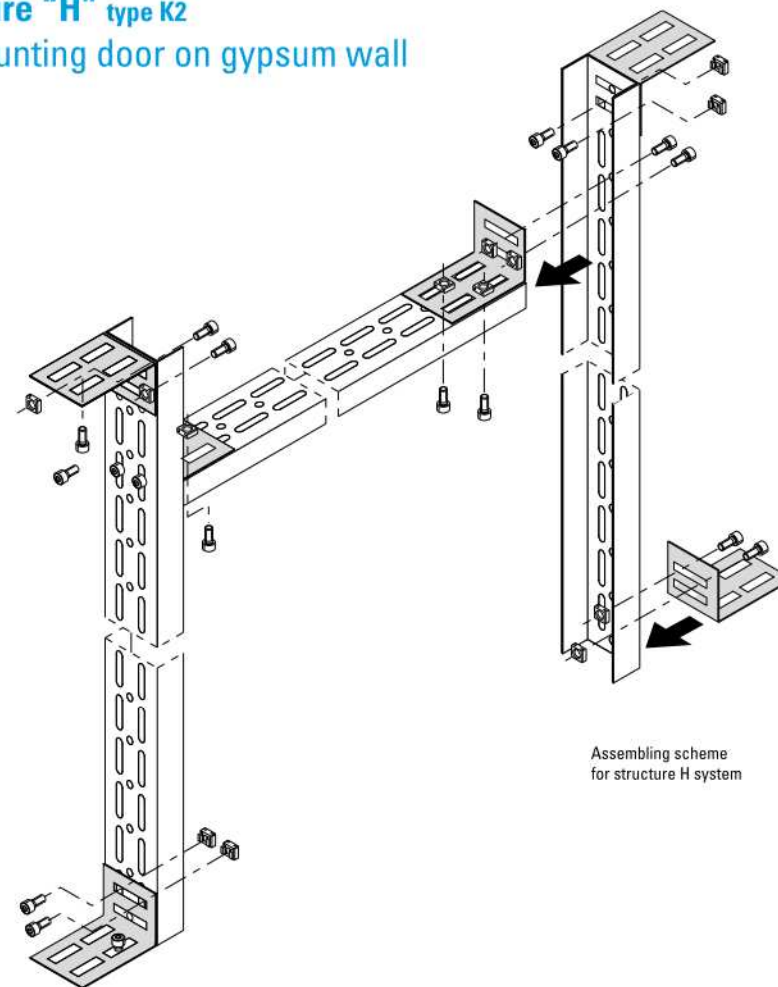


8. Door mounted in the opening (type L)



Structure "H" type K2

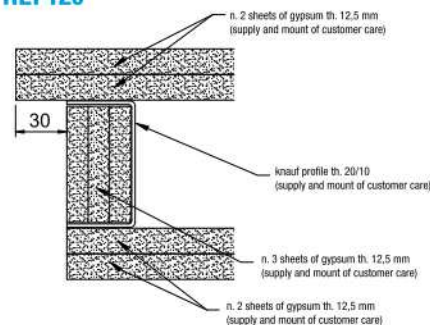
For mounting door on gypsum wall



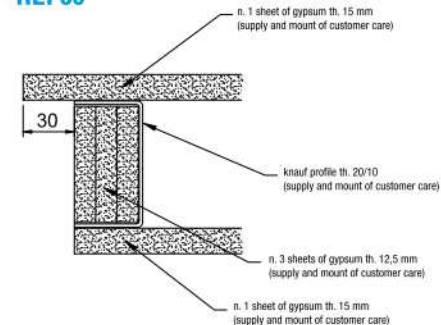
Assembling scheme for structure H system

novoferm

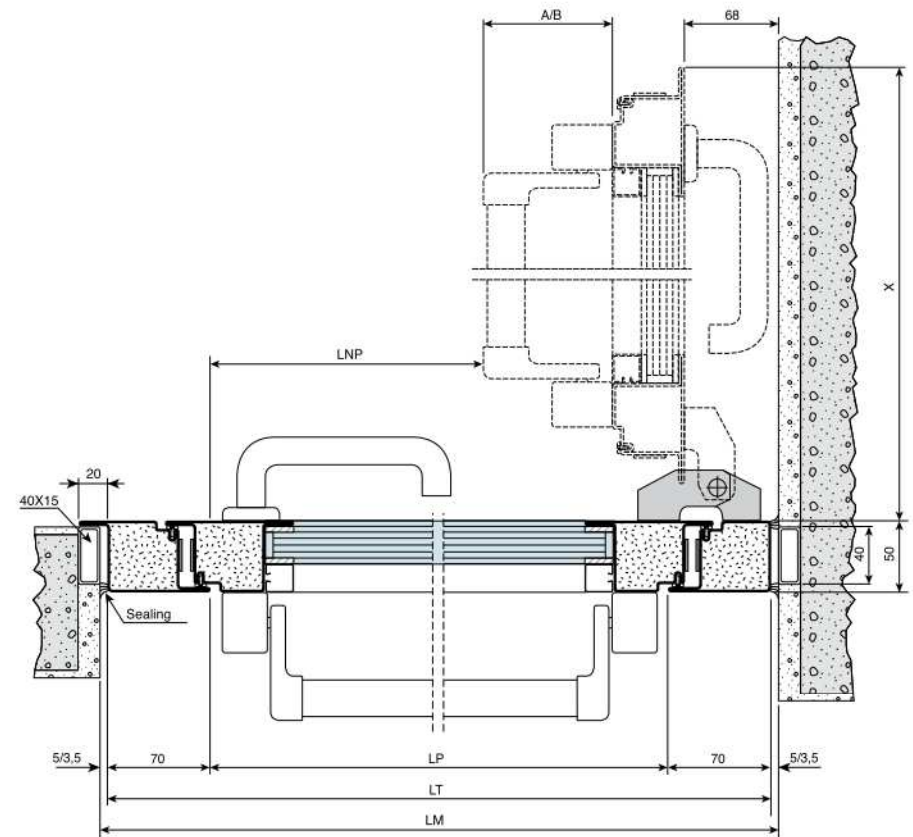
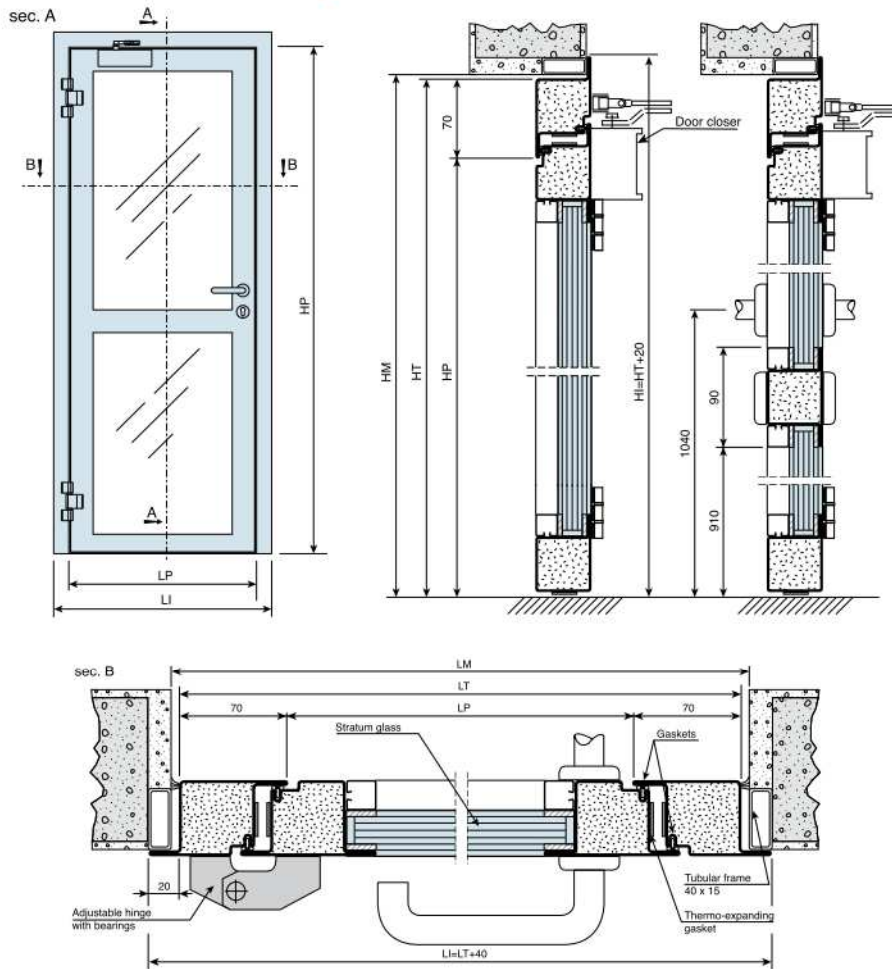
REI 120



REI 60



STAHLGLASS One leaf glazed door REI 30 - REI 60 - RE 120



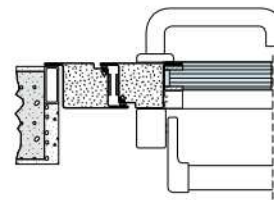
A = 100 Panic device
B = 65 Push Bar

X = LP + 84
LT = LM - 7 with pre-frame
HT = HM - 5 with pre-frame
LT = LM - 10 on concrete
H = LM - 5 on concrete

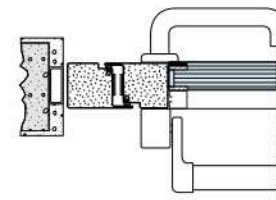
LNP with A = LT - 280
LNP with B = LT - 245

Fire proof glazed door one leaf according to norm UNI 9723

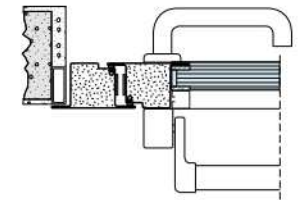
- Frame and leaf frame manufactured in tubular profile 15/10 mm., calibrated, welded on angles, with double spaces to insert rubber gasket. The particular construction of the door permits a perfect alignment between leaf and frame. Tubular profiles are filled with a subliming substance and have a particular drilling on the hidden side in order to limit the thermal conduction. Thermo-expanding gasket on the perimeter.
- Glasses are composed by several stratum of float glass and special clear gel that, in case of fire, becomes blind and gives out refreshing steam. Glasses are fixed by metal profiles clipped on hidden screws.
- n. 2 hinges each leaf, manufactured in sinterized steel sliding on two steel roller bearings, oversized for intensive usage in condition of heavy loads. Their construction allows the adjusting of the leaf position in every moment by means of special screws, normally hidden by plastic cups.
- Black handle with inside steel armour.
- Door closer color black.
- Lock on the active leaf complete of cylinder with three keys
- Painting in RAL colours (brushed) to choose from a list of available colours. On request with aluminium covering.
- Installation possible on tubular preframe already installed on customer care, or by dowels.
- Approx. Weight REI 30 = 40 kg/m², REI 60 = 60 kg/m², REI 120 = 12,50 kg/m².



MOUNTING WITH EXTERNAL REBATE TYPE "Z"

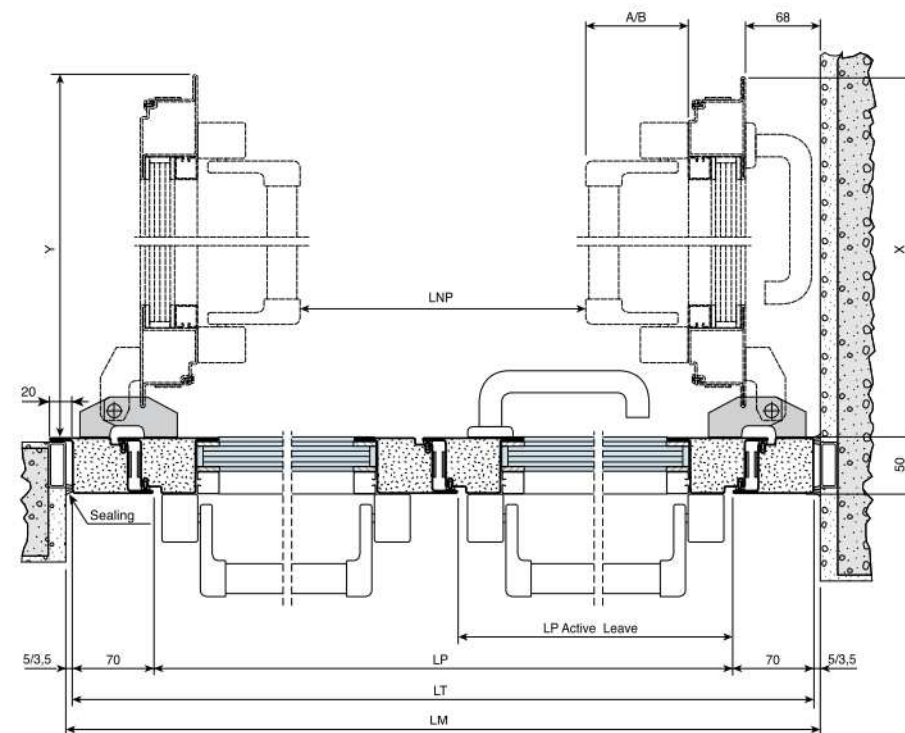
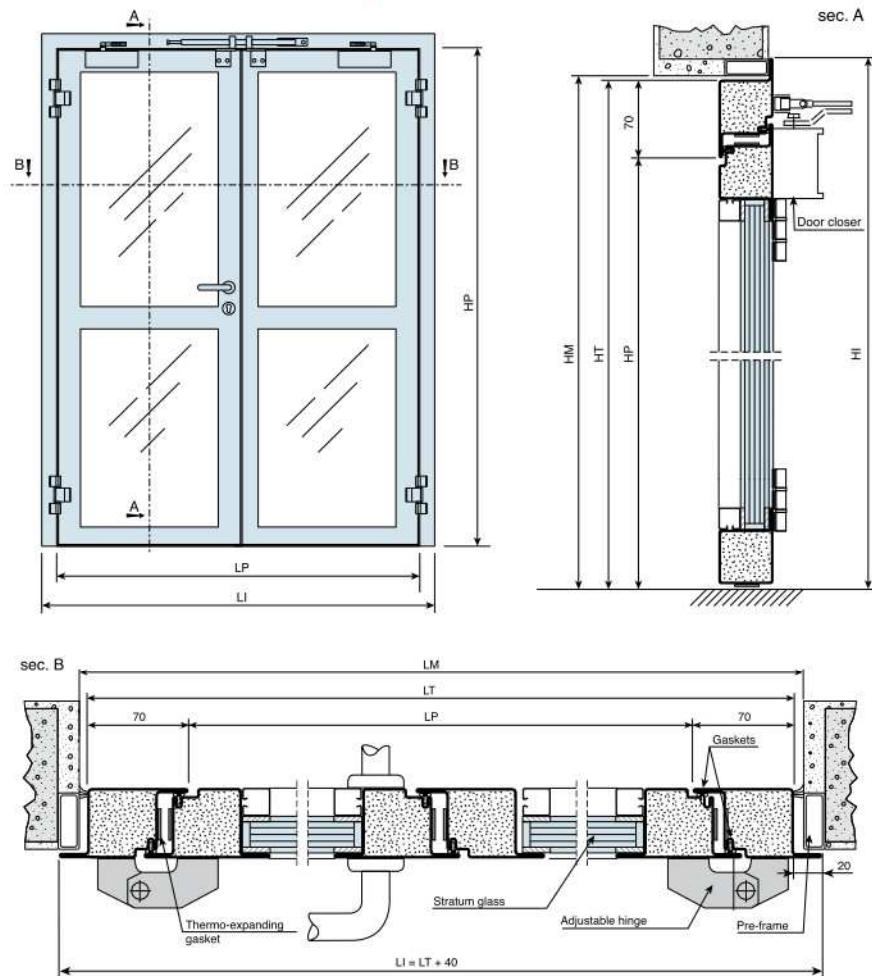


MOUNTING WITH BLOCK FRAME TYPE "L"



MOUNTING WITH INTERNAL REBATE TYPE "T"

STAHLGLASS Two leaves glazed door REI 30 - REI 60 - RE 120



A = 100 with pre-frame
B = 65 Push Bar
LNP with A = LT - 420
LNP with B = LT - 350

LT = LM - 7 with pre-frame
HT = HM - 5 with pre-frame
LT = LM - 10 on concrete
HT = HM - 5 on concrete

Same leaves

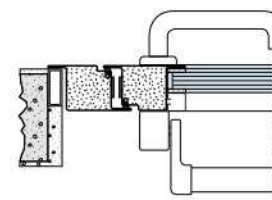
$$\begin{cases} X = Y \\ Y/X = (LP : 2) + 69 \end{cases}$$

Different size leaves

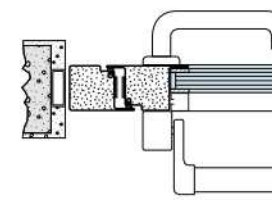
$$\begin{cases} X = LP \text{ 1st leave} + 84 \\ Y = (LP - LP \text{ 1st leave}) + 54 \end{cases}$$

Fire proof glazed door two leaves according to norm UNI 9723

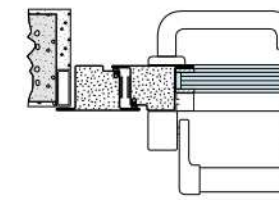
- Frame and leaf frame manufactured in tubular profile 15/10 mm., calibrated, welded on angles, with double spaces to insert rubber gasket. The particular construction of the door permits a perfect alignment between leaf and frame. Tubular profiles are filled with a subliming substance and have a particular drilling on the hidden side in order to limit the thermal conduction. Thermo-expanding gasket on the perimeter.
- Glasses are composed by several stratum of float glass and special clear gel that, in case of fire, becomes blind and gives out refreshing steam. Glasses are fixed by metal profiles clipped on hidden screws.
- n. 2 hinges each leaf, manufactured in sinterized steel sliding on two steel roller bearings, oversized for intensive usage in condition of heavy loads. Their construction allows the adjusting of the leaf position in every moment by means of special screws, normally hidden by plastic cups.
- Black handle with inside steel armour.
- Door closer colour black.
- Lock on the active leaf complete of cylinder with three keys.
- Painting in RAL colours (brushed) to choose from a list of available colours. On request with aluminium covering.
- Installation possible on tubular preframe already installed on customer care, or by dowels.
- Approx. Weight REI 30 = 40 kg/m²
REI 60 = 60 kg/m², RE 120 = 12,50 kg/m².



MOUNTING WITH EXTERNAL REBATE
TYPE "Z"

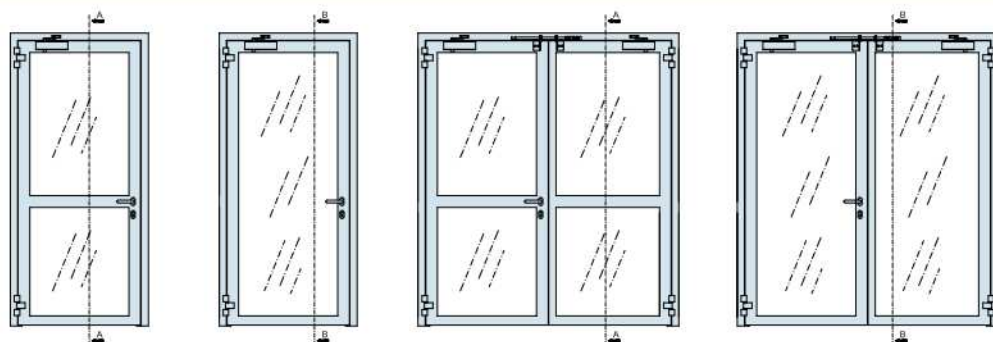
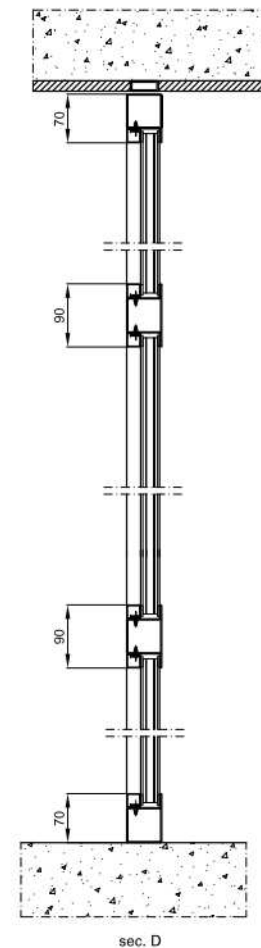
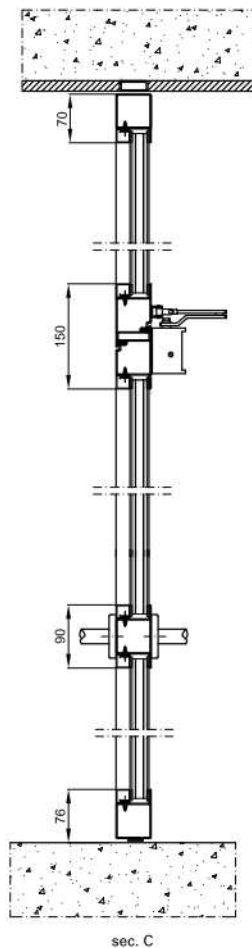
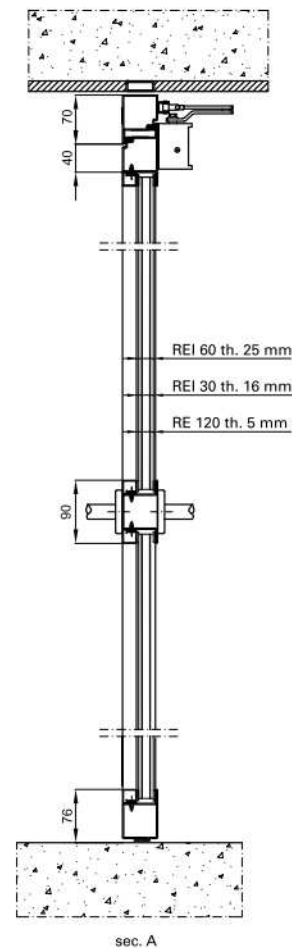
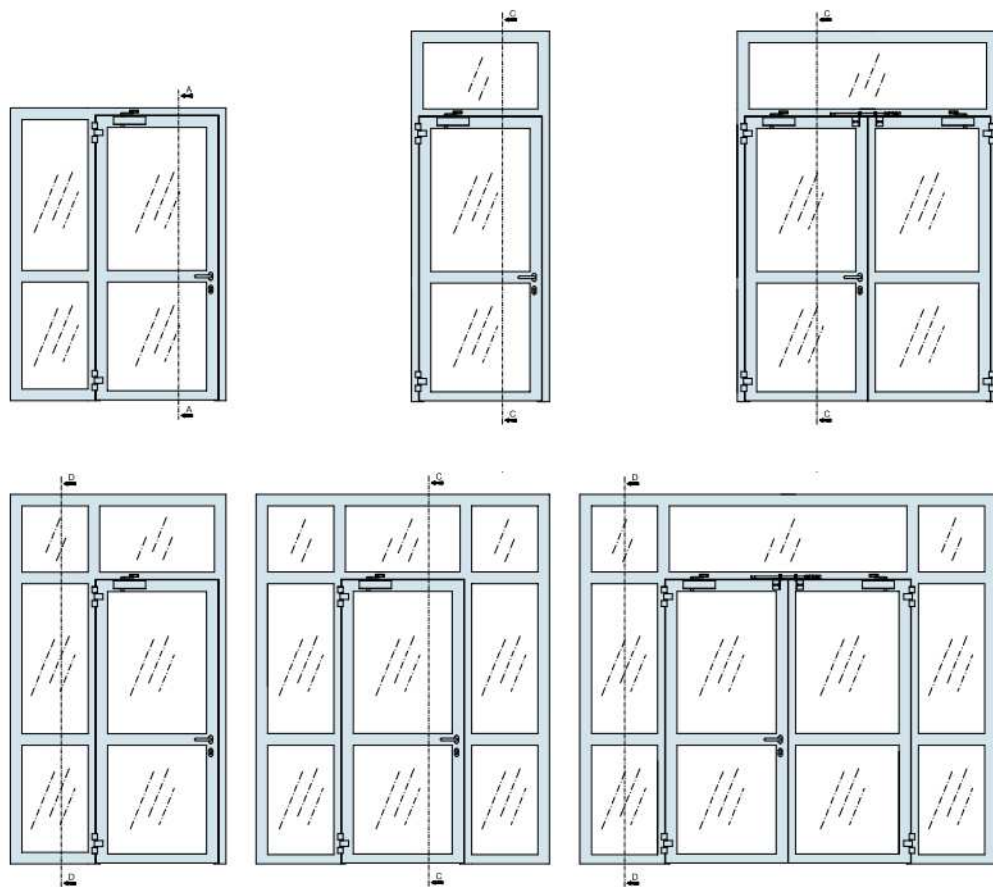


MOUNTING WITH BLOCK FRAME
TYPE "L"

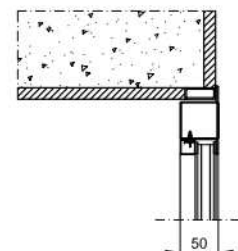


MOUNTING WITH INTERNAL REBATE
TYPE "T"

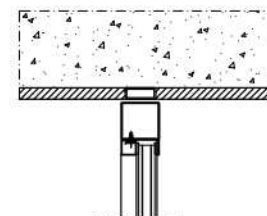
STAHLGLASS Complex glazed door REI 30 - REI 60 - RE 120



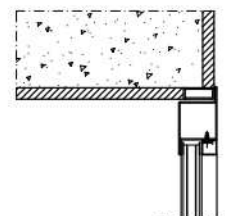
MOUNTING WITH INTERNAL REBATE
TYPE "T"



MOUNTING WITH BLOCK FRAME
TYPE "L"

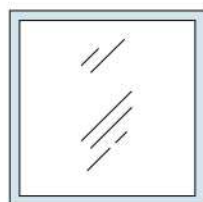


MOUNTING WITH EXTERNAL REBATE
TYPE "Z"

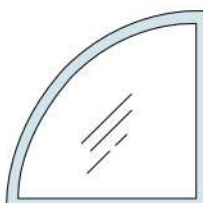


STAHLGLASS Fixed glazed partition REI 60 - RE 120

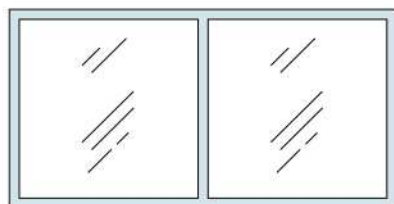
MAX SIZE FOR EACH GLASS MM. 2100 X 1100.
IN CASE OF BIGGER SIZE, THE FIXED PARTITION MUST BE DIVIDED.



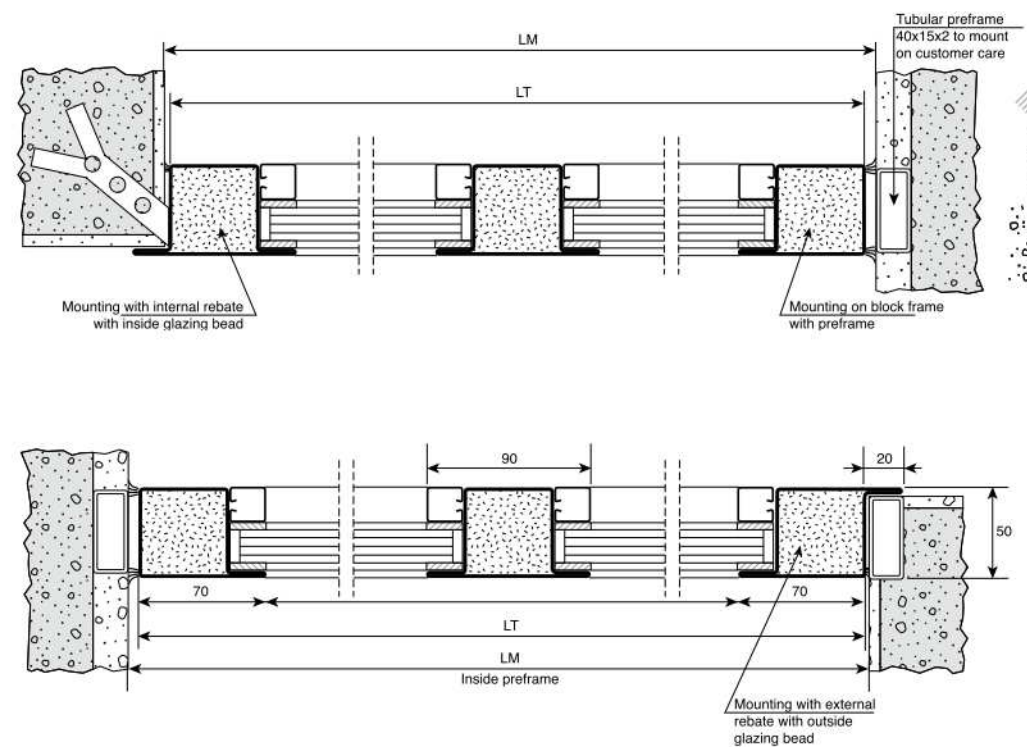
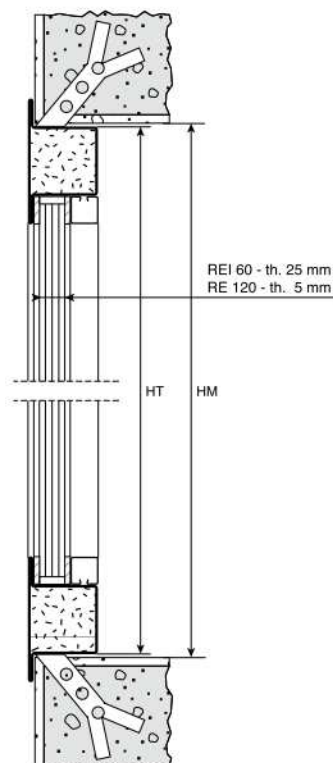
FIXED PARTITION
ONE GLASS



FIXED PARTITION ARC SHAPE



FIXED PARTITION TWO GLASSES



For aesthetical and practical reasons, the fire proof division of particular areas need to be fire proof glazed partition, not only to assure fire, but also to concur the transmission of light.

In these cases the glazed partitions are usually employed: normally they are installed on spaces scale, footbridges of observation in units to high fire risk, offices with sight on working units, etc.

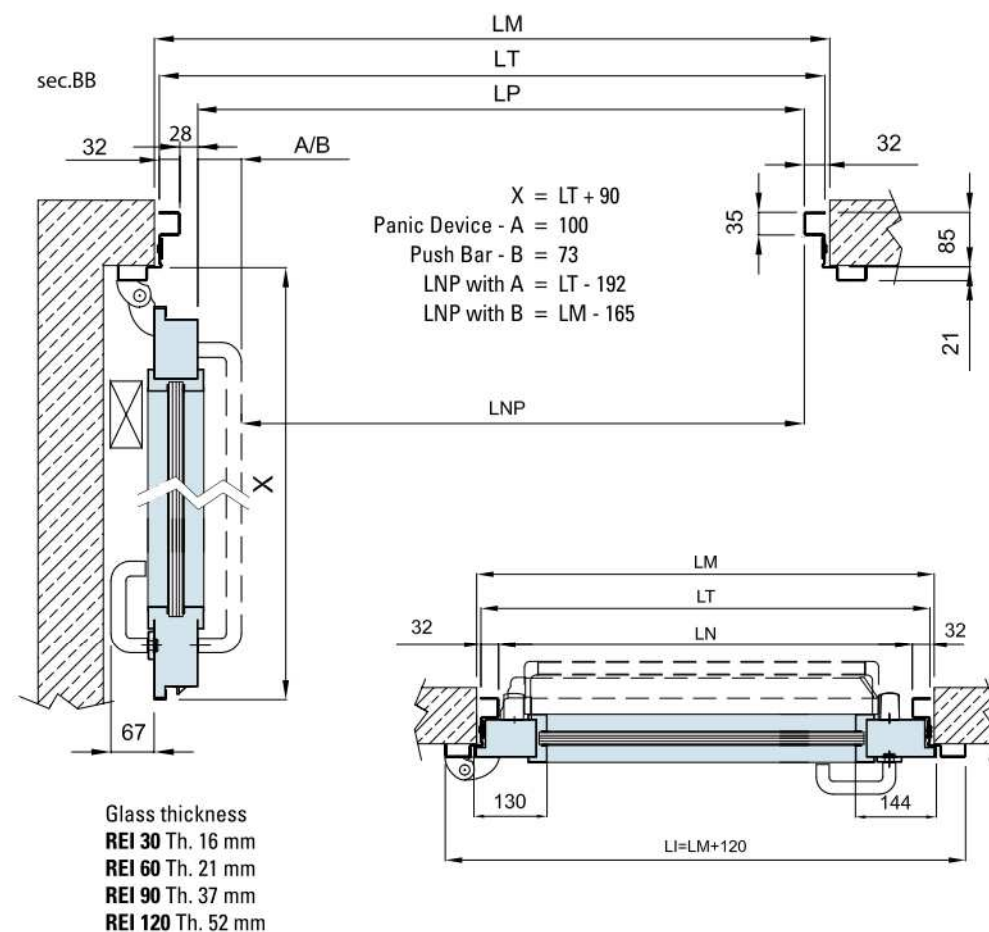
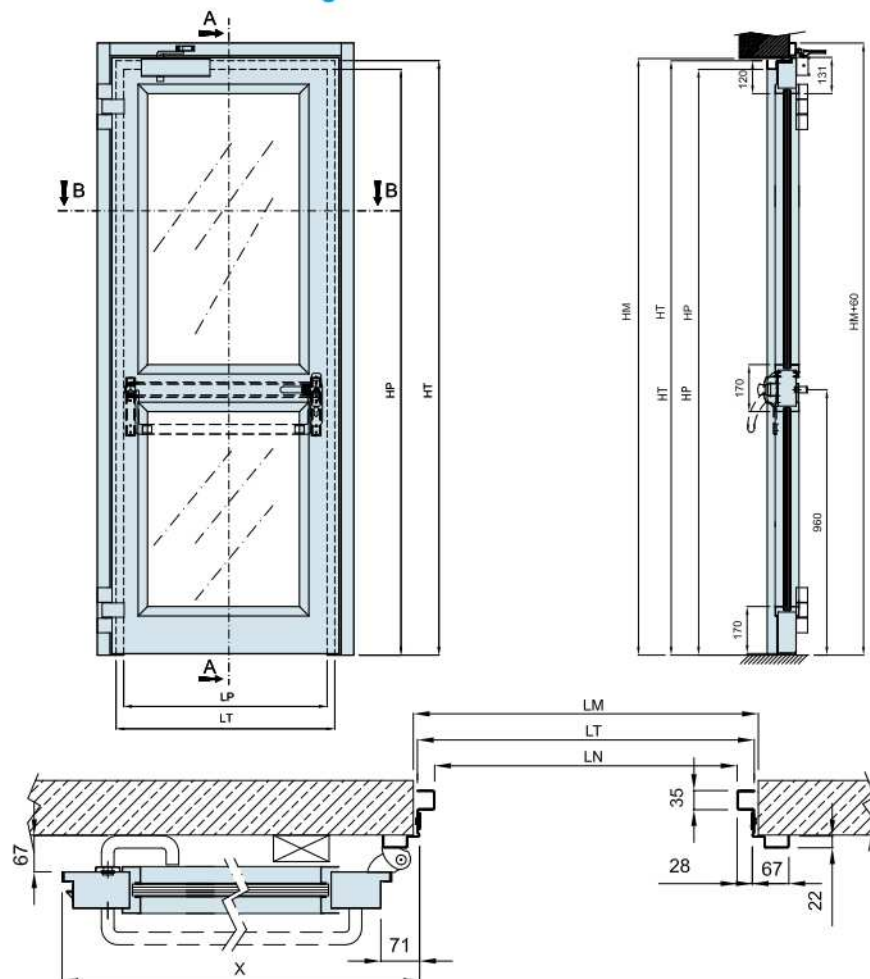
- Frame and leaf frame manufactured in tubular profile 15/10 mm. calibrated and electro-welded steel. The profiles are filled with a special sublimating material and they are characterized from a special processing from the side of the depth in order to avoid the thermic conduction.

- Glasses are composed by several stratum of float glass and special clear gel that, in case of fire, becomes blind and gives out refreshing steam. Glasses are fixed by metal profiles, equipped with special gaskets which permit the swelling of the glass at high temperature.

- Installation possible by wall angles, on tubular preframe already installed on customer care, or by dowels.
- Painting in RAL colours (brushed) to choose from a list of available colours. On request with aluminium covering.
- Installation possible by wall angles, on tubular preframe already installed on customer care, or by dowels.

novoferm

NOVOGLASS One leaf glazed door REI 30 – REI 60 – REI 90 – REI 120



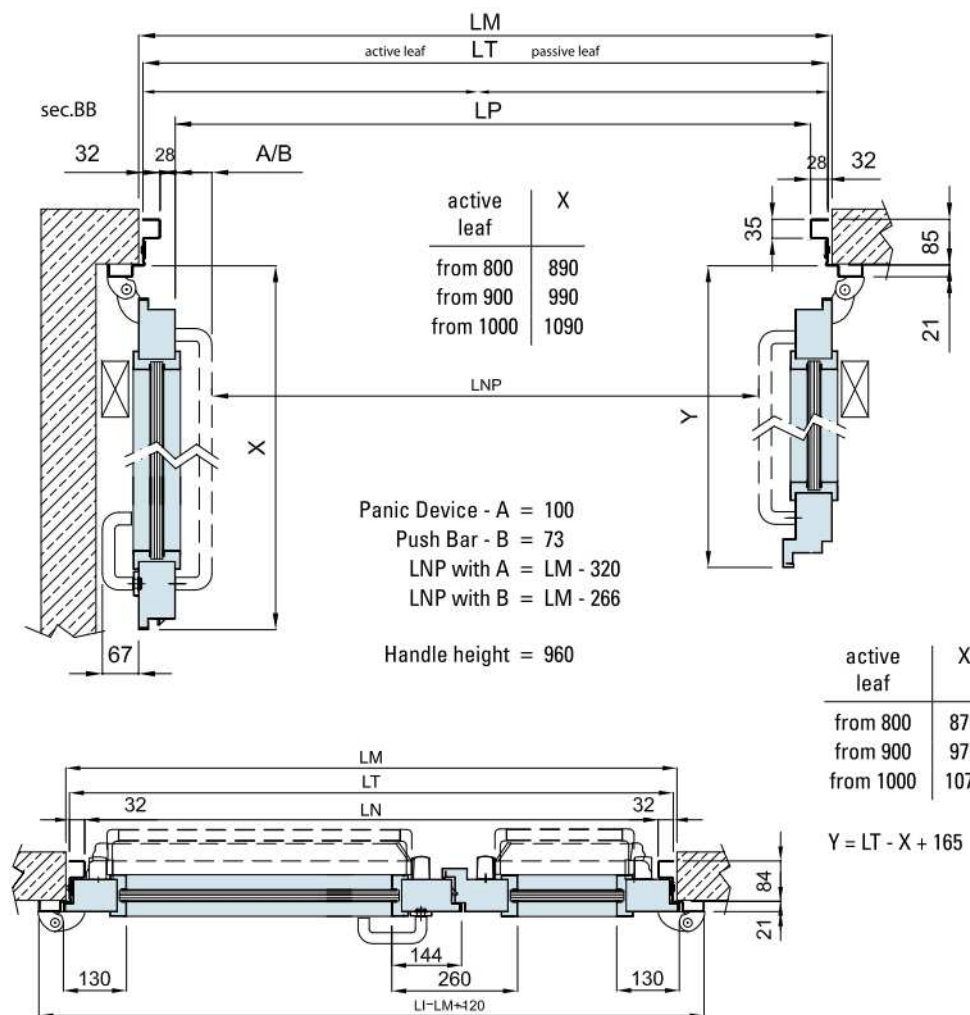
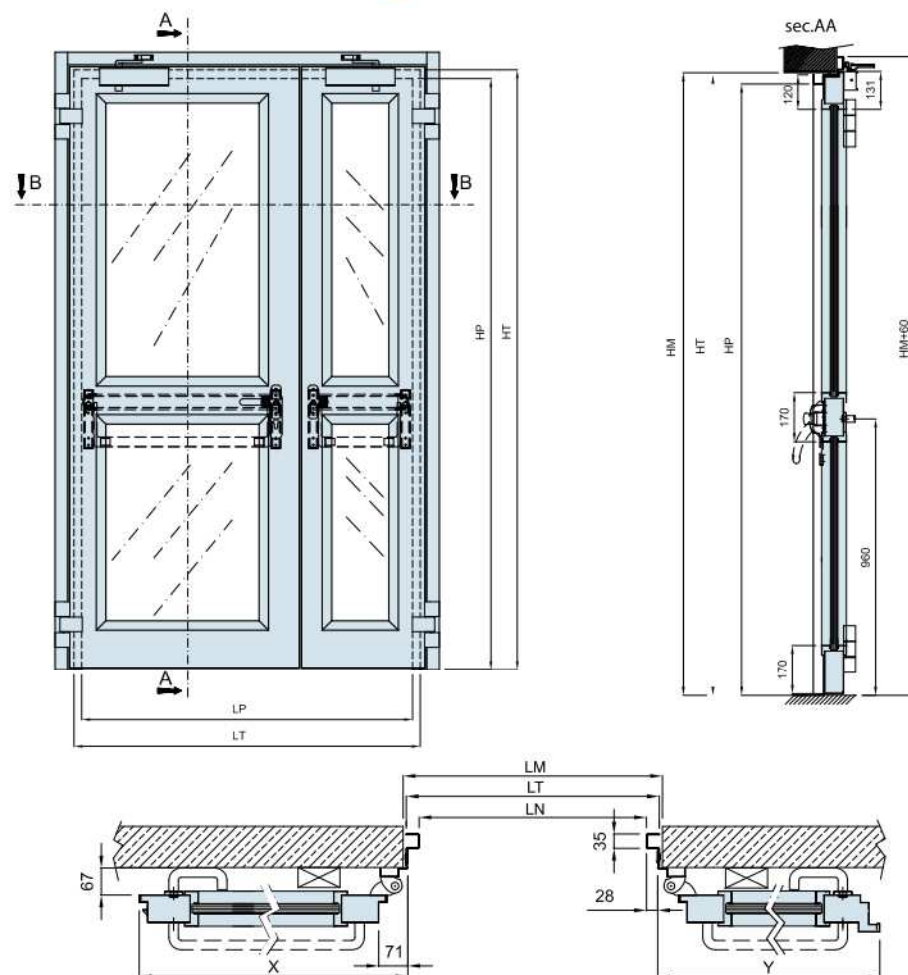
novoferm

NOVOGLASS Fire resistant glazed door according to Italian rule UNI 9723.

- Perimeter frame in "Z" shaped galvanised steel profile th. mm. 15/10, conformed to give complianarity between leaf and frame. It has spaces for the insertion of thermal-expanding gasket. Holes for wall fixing hidden after the assembly at site.
- Leaf made by one perimeter structure in steel, with supporting section, realised by double galvanised steel sheet bended, boxed, welded, with inner inorganic insulating package. Leaf profile has a special working on the thickness from the side of glasses (invisible after the assembly at site) in order to limit the thermal conduction between the two faces.
- Stratified glasses, composed by different stratum of glass sheets interposed with silicate-based gel that, normally clear, in fire becomes opaque and emits steam. Glasses are fixed by sturdy stoppers, with no screws on sight
- Nr. 2 hinges each leaf, made in sinterized steel, with sliding on two steel roller bearings, oversized for intensive usage in condition of heavy loads. Their construction allows the adjusting of the leaf position in every moment by means of special screws, normally hidden by plastic cups.
- Black handle with inside steel armour
- Door closer color black
- Lock on the active leaf complete of cylinder with three keys
- Thermo-expanding gasket, rostrum between the two hinges
- Preframe on request
- Painting in RAL colours (brushed) to choose from a list of available colours
- Painting in RAL colours (brushed) to choose from a list of available colours.

The particular construction of the door permits a perfect alignment between leaf and frame, furthermore 19 mm. thick rebated minimizes accident risks in case of contact with person.

NOVOGLASS Two leaves glazed door REI 30 – REI 60 – REI 90 – REI 120



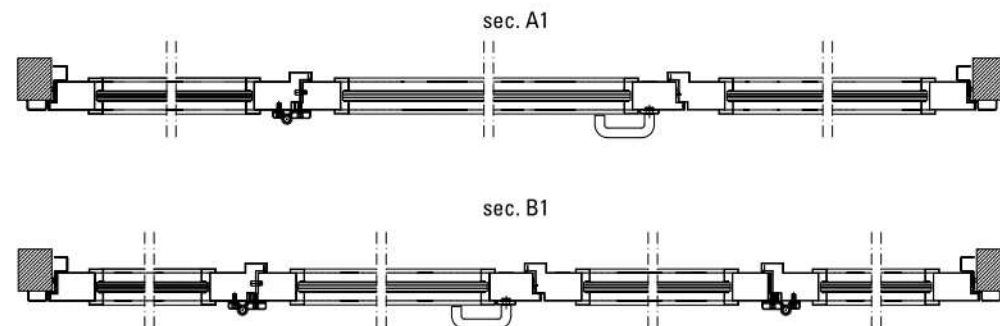
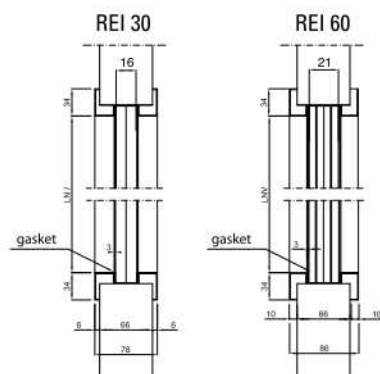
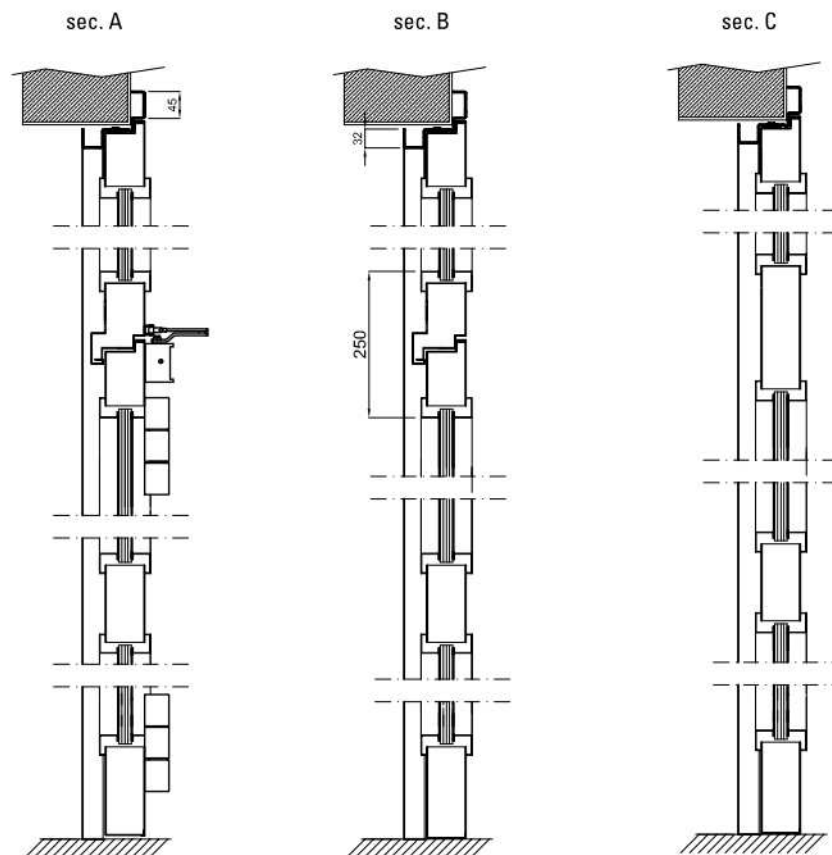
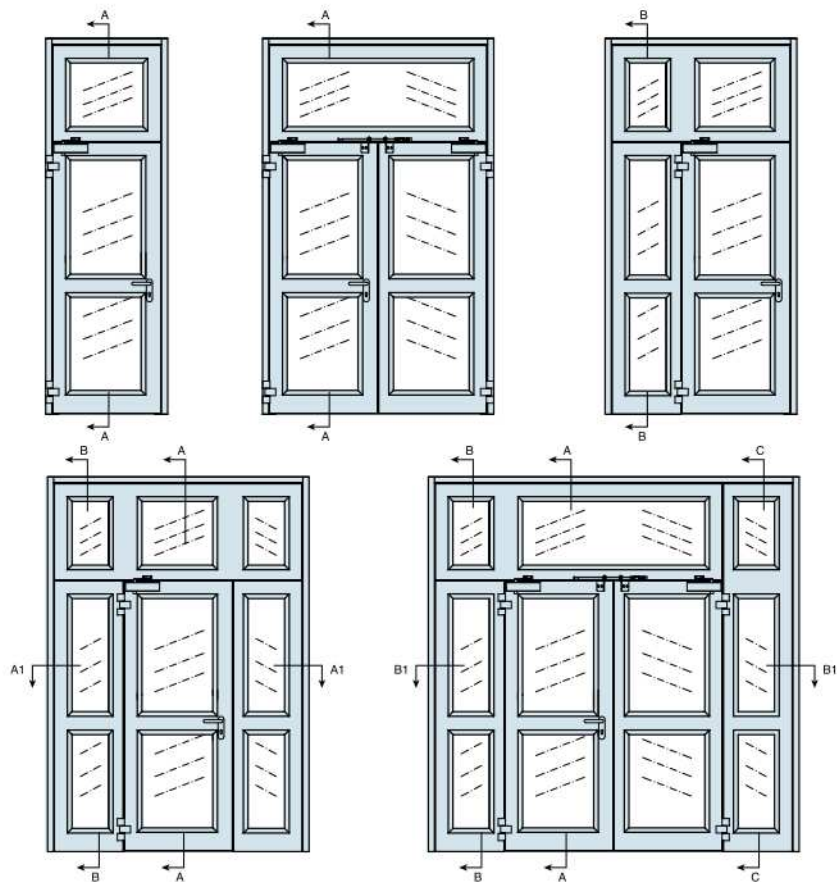
novoferm

NOVOGLASS Fire resistant glazed door according to Italian rule UNI 9723

- Perimeter frame in "Z" shaped galvanised steel profile th. mm. 15/10, conformed to give complanarity between leaf and frame. It has spaces for the insertion of thermal-expanding gasket. Holes for wall fixing hidden after the assembly at site.
- Leaf made by one perimeter structure in steel, with supporting section, realised by double galvanised steel sheet bended, boxed, welded, with inner inorganic insulating package. Leaf profile has a special working on the thickness from the side of glasses (invisible after the assembly at site) in order to limit the thermal conduction between the two faces.
- Stratified glasses, composed by different stratum of glass sheets interposed with silicate-based gel that, normally clear, in fire becomes opaque and emits steam. Glasses are fixed by sturdy stoppers, with no screws on sight.
- Nr. 2 hinges each leaf, made in sinterized steel, with sliding on two steel roller bearings, oversized for intensive usage in condition of heavy loads. Their construction allows the adjusting of the leaf position in every moment by means of special screws, normally hidden by plastic cups.
- Black handle with inside steel armour
- Door closer colour black
- Lock on the active leaf complete of cylinder with three keys
- Lock on the passive leaf type flush-bolt with lever opening.
- Thermo-expanding gasket, rostrum between the two hinges;
- Preframe on request
- Painting in RAL colours (brushed) to choose from a list of available colours.
- The particular construction of the door permits a perfect alignment

between leaf and frame, furthermore 19 mm. thick rebated minimizes accident risks in case of contact with person.

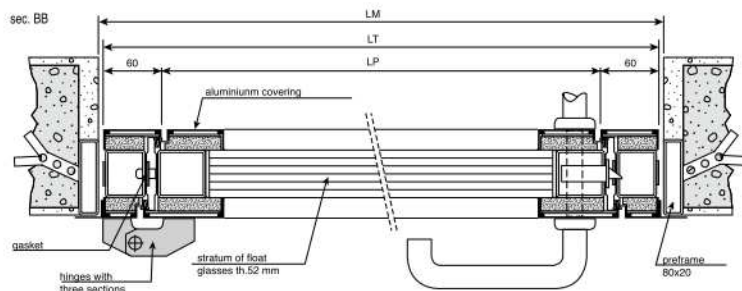
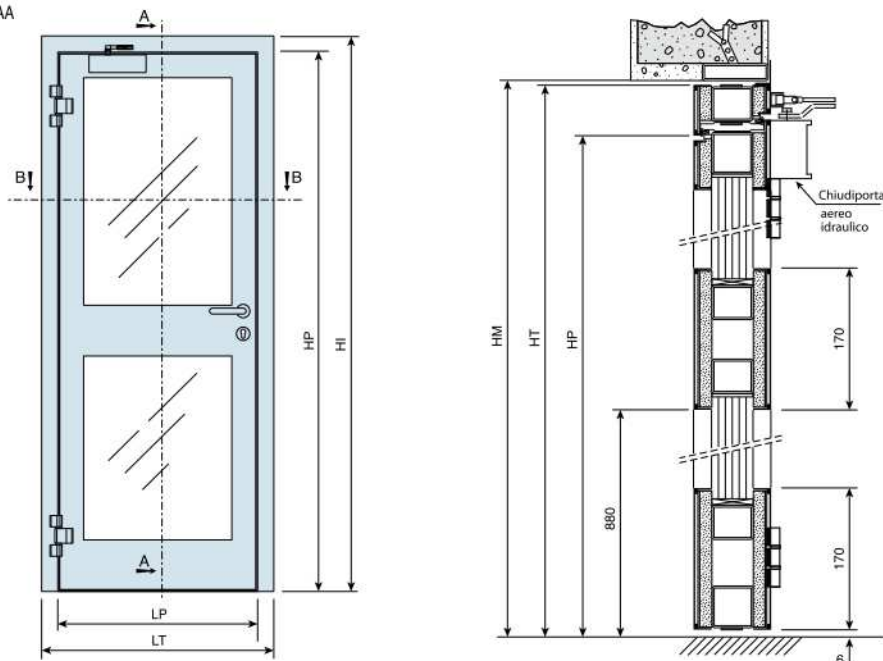
NOVOGLASS Complex glazed door REI 30 – REI 60 (also without horizontal beam)



novoferm

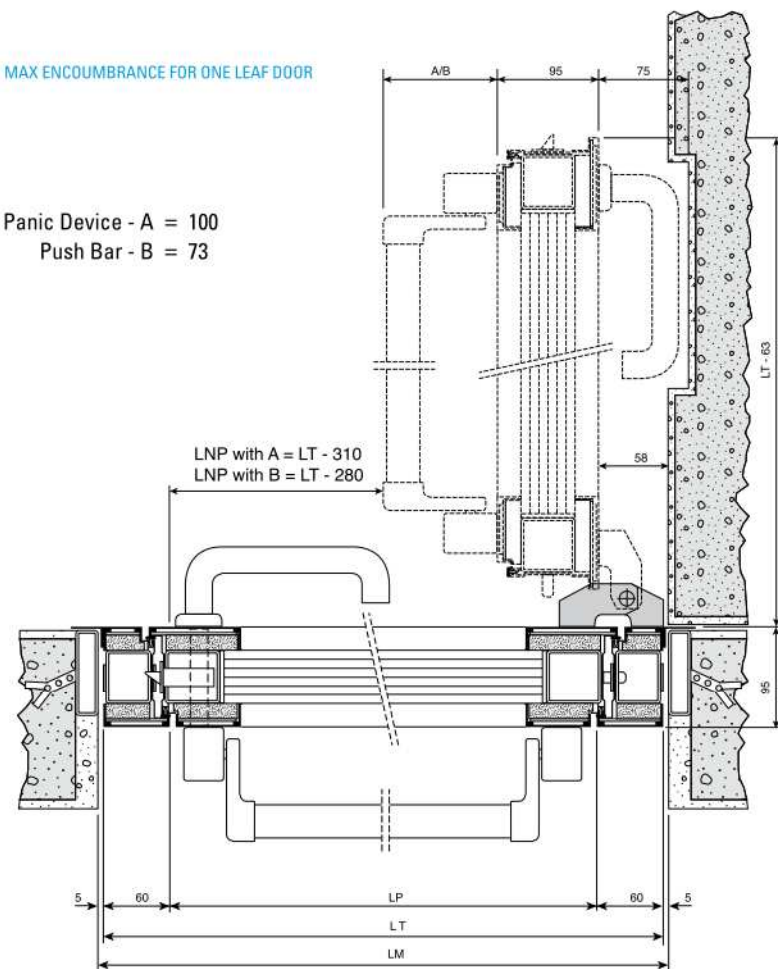
ALUSTAHL One leaf glazed door REI 120

sec. AA



MAX ENCUMBRANCE FOR ONE LEAF DOOR

Panic Device - A = 100
Push Bar - B = 73



Fire proof glazed door ALUSTAHL one leaf certified according to Italian rule UNI 9723.

- Frame and leaf frame manufactured in tubular profile 30/10 mm, calibrated steel, with double spaces for insert rubber gasket and intumescent strip. Tubular profiles are filled with a subliming substance and have a particular drilling on the hidden side in order to limit the thermal conduction between the two leaf's sides. Everything covered by aluminium profiles electro-coloured or painted. The particular construction of the door permits a perfect alignment between leaf and frame, without any rise on the hinges.
- Glasses are composed by several stratum of float glass and special clear gel that, in case of fire, becomes blind and gives out refreshing steam. Glasses are fixed by metal profiles clipped on hidden screws.
- N. 2 hinges each leaf in sinterized steel sliding on two steel roller bearings, oversized for intensive usage in condition of heavy loads
- Fire proof lock, cylinder with three keys.
- Door closer black colour.
- Thermo-expanding gasket around perimeter of the door.
- Handle with steel armour inside.
- Painting in RAL colours (brushed) to choose from a list of available colours
- Installation on pre-frame already installed from the customer.

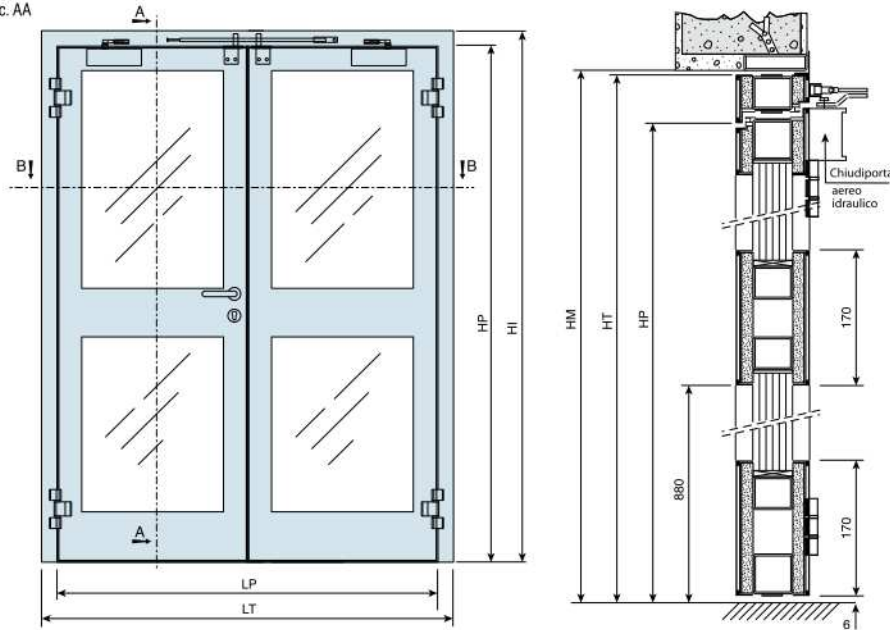
NOTE:

- due to the high weight of the glass (approx. 150 kg/m²) and its concentration on limited surface, we suggest to verify carefully the structure of wall before installation.

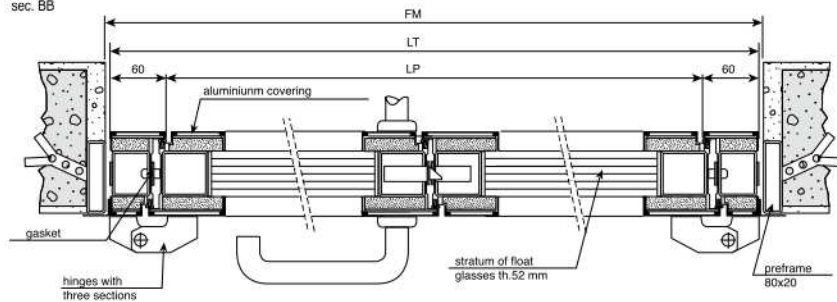
novoferm

ALUSTAHL Two leaves glazed door REI 120

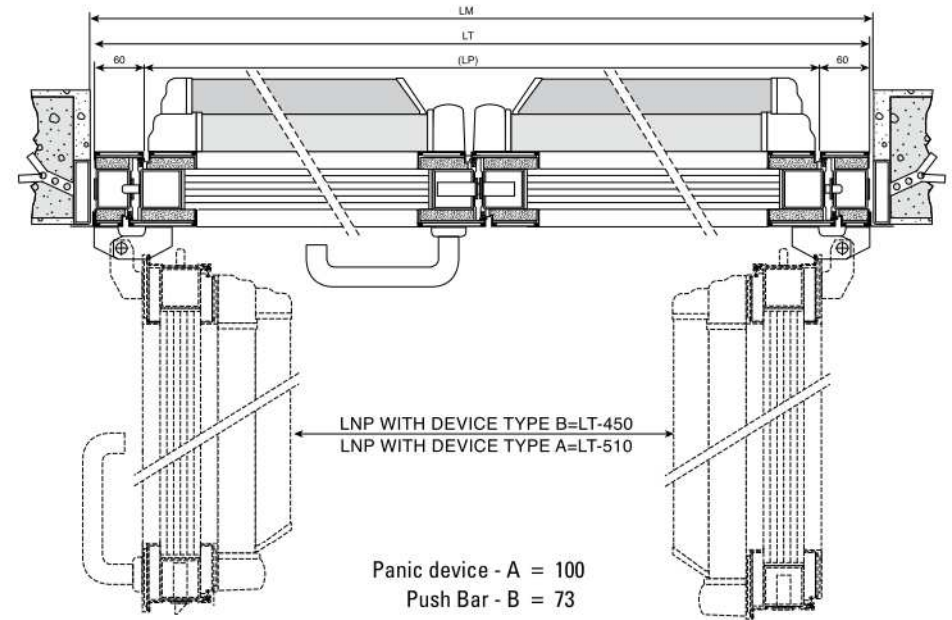
sec. AA



sec. BB



MAX ENCUMBRANCE FOR ONE LEAF DOOR



Panic device - A = 100
Push Bar - B = 73

NOTE : in case of passive leaf with panic device,
you must use it only with active leaf already opened.
A different usage can cause a malfunctioning.

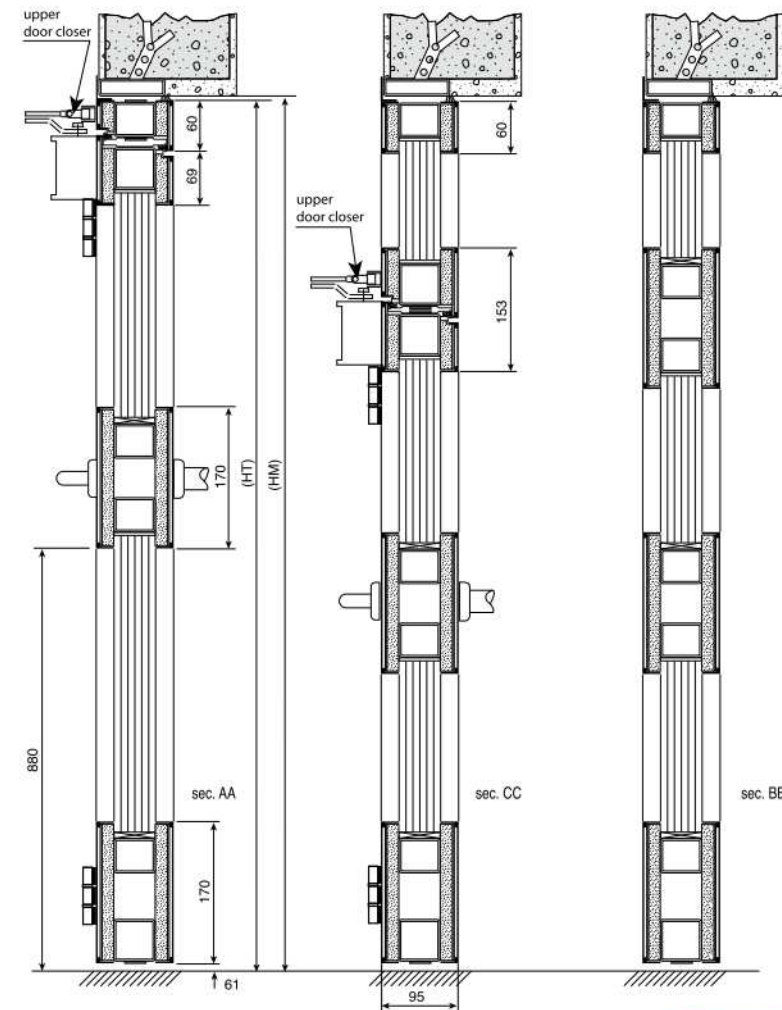
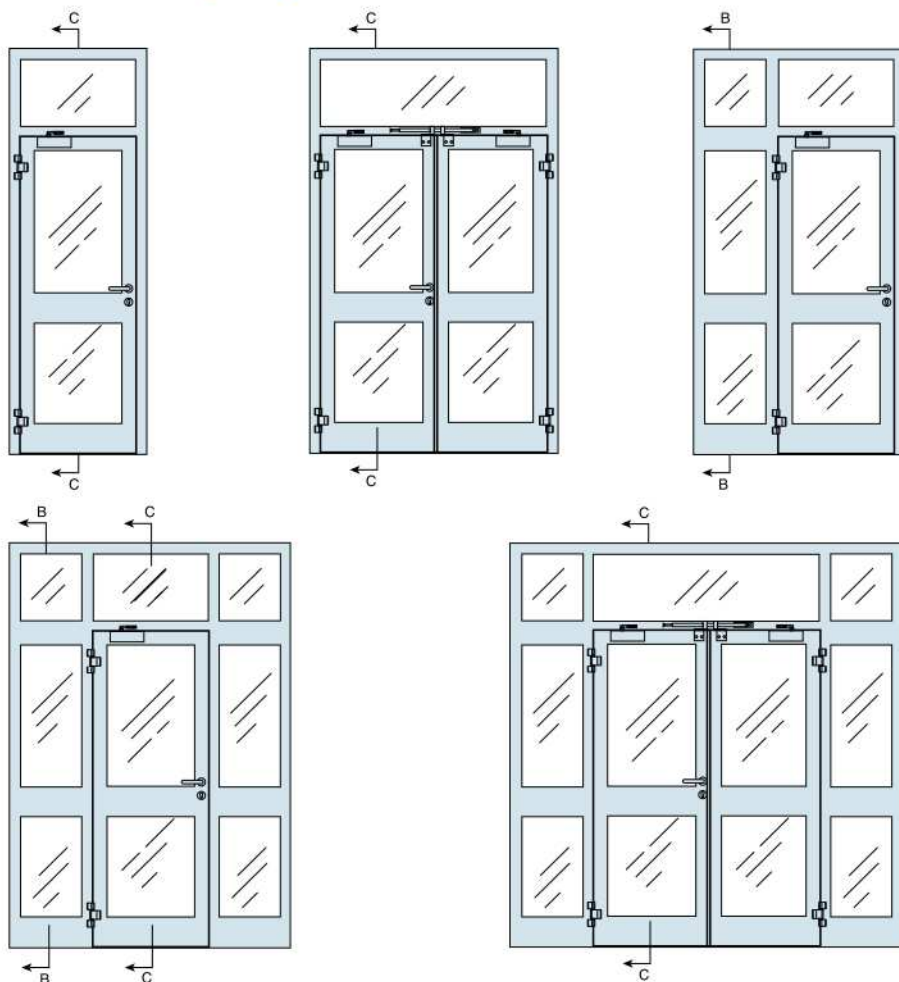
Fire proof glazed door ALUSTAHL two leaves certified according to Italian rule UNI 9723.

- Frame and leaf frame manufactured in tubular profile 30/10 mm, calibrated steel, with double spaces for insert rubber gasket and intumescent strip. Tubular profiles are filled with a subliming substance and have a particular drilling on the hidden side in order to limit the thermal conduction between the two leaf's sides. Everything covered by aluminium profiles electro-coloured or painted. The particular construction of the door permits a perfect alignment between leaf and frame, without any rise on the hinges.
- Glasses are composed by several stratum of float glass and special clear gel that, in case of fire, becomes blind and gives out refreshing steam. Glasses are fixed by metal profiles clipped on hidden screws.
- N. 2 hinges each leaf in sinterized steel sliding on two steel roller bearings, oversized for intensive usage in condition of heavy loads.
- Fire proof lock, cylinder with three keys.
- Door closer black colour.
- Thermo-expanding gasket around perimeter of the door.
- Handle with steel armour inside.
- Painting in RAL colours (brushed) to choose from a list of available colours.
- Installation on pre-frame already installed from the customer.

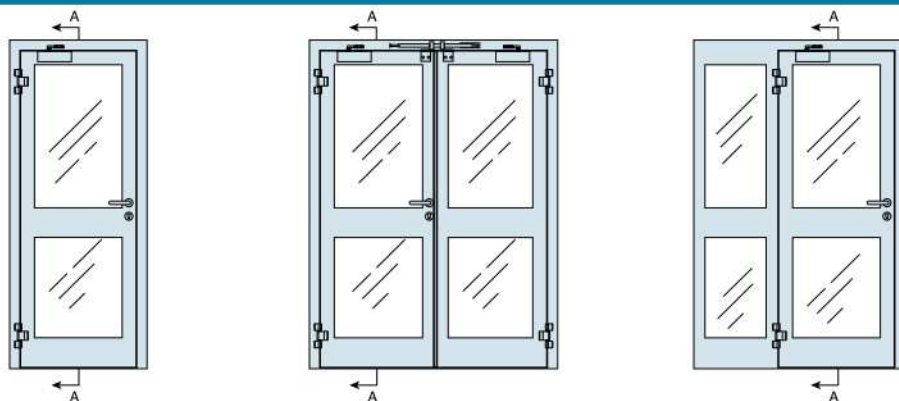
NOTE:

- Due to the high weight of the glass (approx. 150 kg/m²) and its concentration on limited surface, we suggest to verify carefully the structure of wall before installation.

ALUSTHAL Complex glazed door REI 120



novoferm

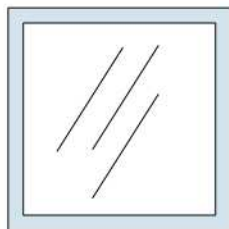


WWW.NOVOFERM.IT

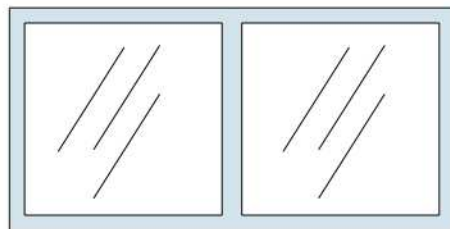
SEE THE GLOSSARY ON FIRST PAGE FOR SIZES' ACRONYMS

FIXGLASS - ALUSTAHL Fixed glass REI 120

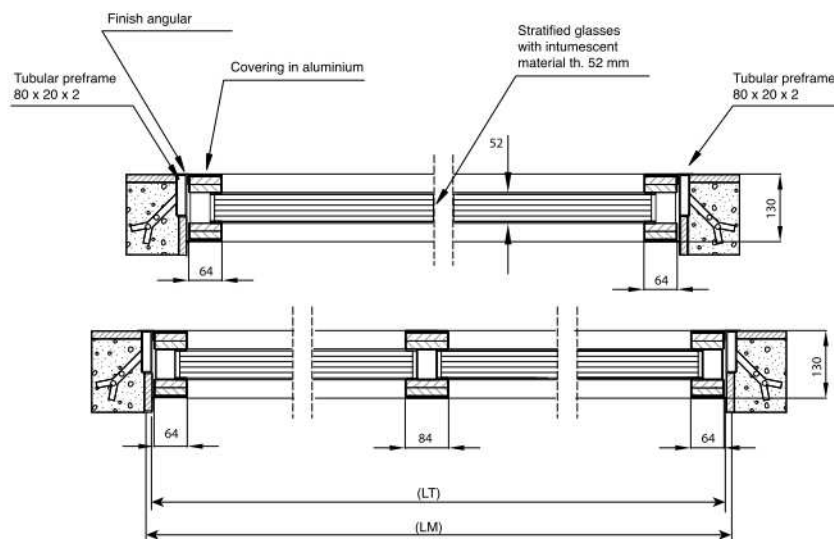
MAX SIZE FOR EACH GLASS MM. 2100 X 1100.
IN CASE OF BIGGER SIZE, THE FIXED PARTITION MUST BE DIVIDED



FIXED PARTITION
ONE GLASS



FIXED PARTITION
TWO GLASSES



For aesthetical and practical reasons, the fire proof division of particular areas need to be fire proof glazed partition, not only to assure fire, but also to concur the transmission of light.
In these cases the glazed partitions are usually employed: normally they are installed on spaces scale, footbridges of observation in units to high fire risk, offices with sight on working units, etc.

- Leaf frame manufactured in tubular profile 30/10 mm. Covered on both sides with sheets of silicate, fixed to the tubular by steel plates. Everything covered by aluminium profiles electro-coloured or painted for Alustahl or by steel painted profiles for Fixglass.

- Glasses are composed by several stratum of float glass and special clear gel that, in case of fire, becomes blind and gives out refreshing steam. Glasses are fixed by metal profiles covered by aluminium, equipped with special gaskets which permit the swelling of the glass at high temperature.
- Thermo-expanding gaskets mounted on the fixed frame.

Standard equipment



Hinges for
Stahlglass / Alustahl doors



Hinges for
Elite / Novoglass doors



novoferm

Handle with plate for Novoglass

Nice design and U shape.
Cylinder with three keys
as standard equipment.

Standard black colour
On request stainless steel.

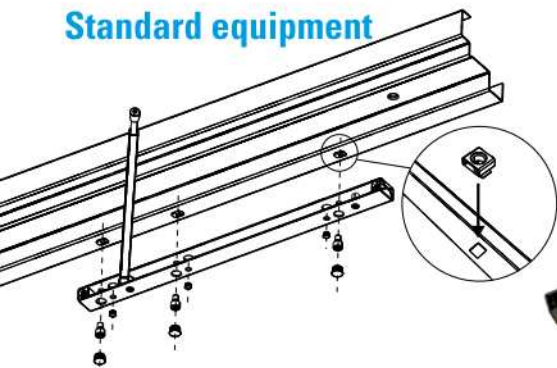


Handle with rosette for Stahlglass / Alustahl

Standard black colour
On request stainless steel.



Standard equipment



Arm closing selector for Novoglass two leaves

Available colours:
- Black
- Silver

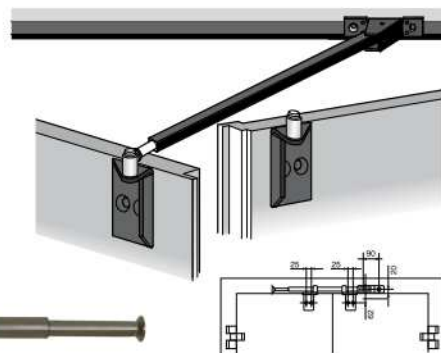


Arm closing selector for Stahlglass / Alustahl (excluded Novoglass)

In case of concurrent opening of the two leaves, it guarantees the correct order of closing.

Standard on double leaves door

Available colors :
- black
- silver



Accessories for glazed doors

Electromagnets

Electromagnet on leaves composed by external box (white colour) and switch bottom on the top of it.



Moving plate

Electromagnet with switch bottom

Technical details:
Voltage
Power
Adhesion power
Insertion time
Working temperature
Protection

24 V
1,5 W
690 N (60 kg)
100%
-20 +80C
IP 40 DIN 40050



Door closer for double leaf door with arm closing selector included
mod. DORMA TS93 GSR



Door closer

It works through a spring in oil mounted on the mobile leaf. The oil permits a soft closing of the door. The door closer is composed of a double system of speed regulation: A) When door opens more than 10°. B) When door opens less than 10°. Operation by scissor action arm or slide action arm. Covered by a black box.



Scissor action arm

Slide action arm

Accessories for glazed doors

Panic devices with bar type A



CORBIN
aluminium bar (A1)
encumbrance 100 mm

CISA
red bar (A2)
encumbrance 100 mm

CISA
Cisa prestige
stainless steel (A3)
encumbrance 100 mm

Panic devices

All panic devices work by a mechanism inside the leaf which permits to open the door also pushing on the secondary leaf only.

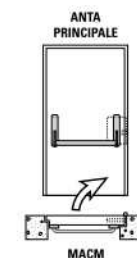
Panic devices Push type B



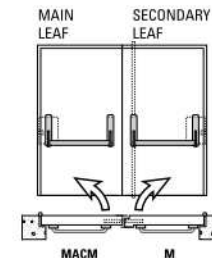
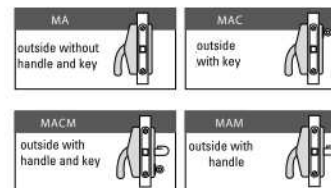
Novopush similar
to stainless steel (B1)
encumbrance 73 mm

Novopush Black (B2)
encumbrance 73 mm

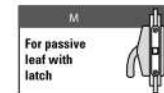
Touch Bar Cisa (B3)
encumbrance 73 mm



PANIC DEVICE FOR ACTIVE LEAF



PANIC DEVICE FOR PASSIVE LEAF



NovoGuard

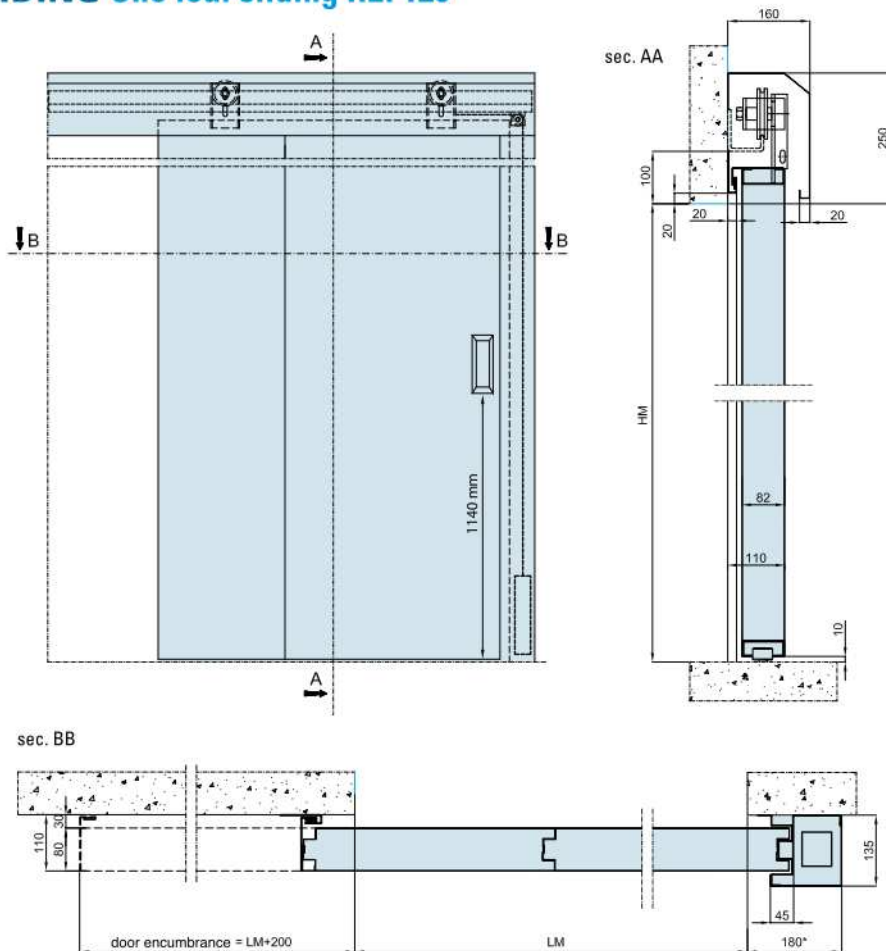
The NovoGuard panic device certified UNI EN 1125, has the less operating space in the market.
MM 79



On request photoluminescent strip high visibility (Novoform patent). NovoGuard and Novopush completed the exclusive range of panic devices produced directly by Novoferm Schievano, a global reference point for fire proof closures and sectional doors.

NovoGuard according to European Norm UNI EN1125, with CE mark, working on inside lock. Reversible, compact encumbrance mm. 79 and equipped by aluminium bar with an evidence green central plastic strip which highlights the way of escape (patented). Equipped by a rotation device with lever working on pillow blocks with a minimum working stress (patented). Available in different lengths, simply to shorten, absence of holes and cracks in any position, resistant to corrosion of salt fog. Available with different finishing, with cylinder and handle outside.

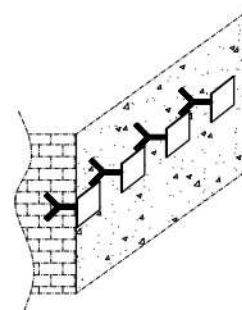
SLIDING One leaf sliding REI 120



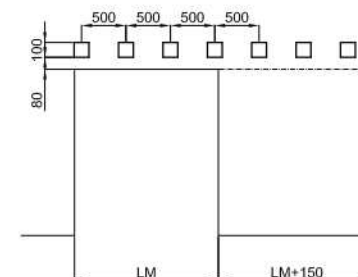
*SIZES FOR DOOR WITH HM>LM. IN CASE HM<LM, ENCUMBRANCE OF COUNTERWEIGHT COMPARTMENT CAN REACH MM 440

Special Condition

Walled up stirrups

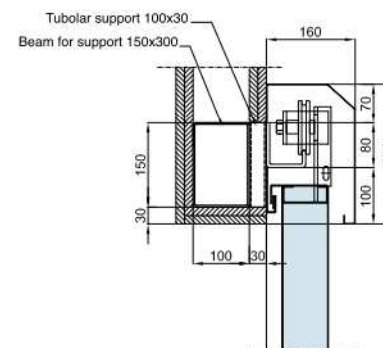


Installation on walls with a low mechanical strength

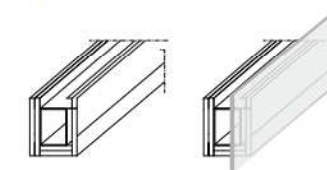


ATTN. For installation on flat ceiling or for sliding door with low height/width ration, please contact company

Beam for support

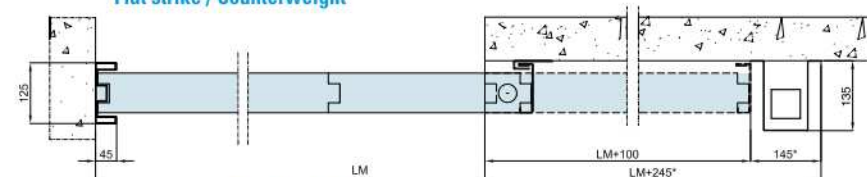


Gypsum cover at the customer's expense (*)

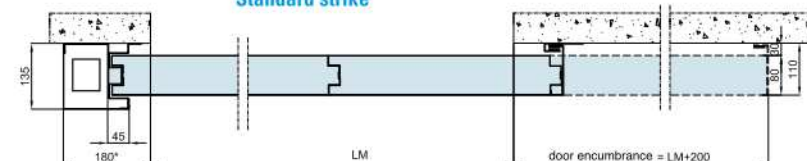


- Modular panels realised in galvanised, prepainted and welded sheet of steel, with high density insulating package inside.
- Upper strike beam equipped with guide and counterweight, which ensures closure in case of fire.
- Smoke and flame labyrinth on the perimeter of the leaf.
- Upper hoisting rail, low friction, complete of special supports to mount on architrave in reinforced concrete, metallic cover inspectable.
- Thermo-expanding gasket all around the door.
- Fixed handles for the opening.
- The sliding door has no floor guide, the alignment is maintained by a bottom wheel not visible. The sliding is sweet thanks to wheels with curve, mounted on double bearing.
- The particular construction method allows easy inspection of all mechanism.
- The doors are normally equipped with self-closing device through counterweight, driven by a thermal fuse (rated at 68 ° C).
- Superficial finish with primer colour RAL 7035 (brushed).
- The door is equipped with a final or continuous shock absorber according necessity.

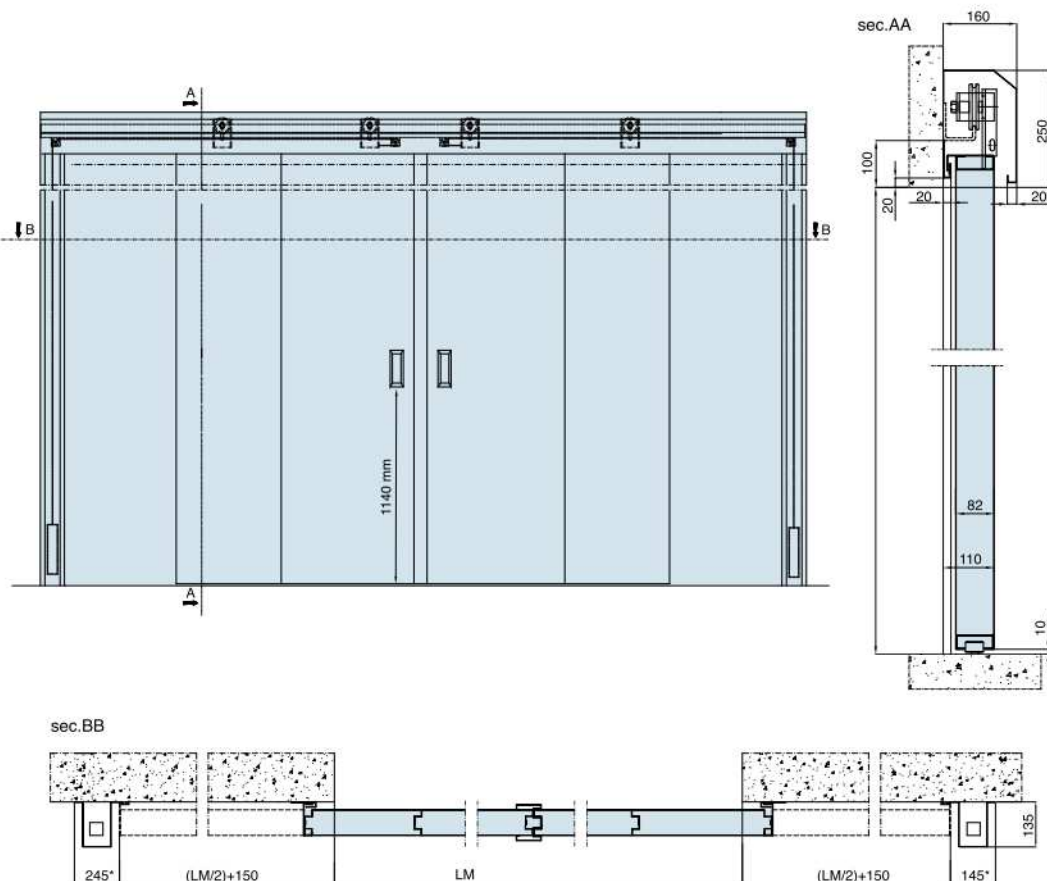
Flat strike / Counterweight



Standard strike



SLIDING Two leaves sliding REI 120

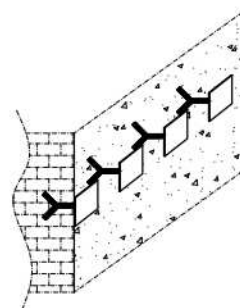


*SIZES FOR DOOR WITH HM>LM. IN CASE HM<LM, ENCUMBRANCE OF COUNTERWEIGHT COMPARTMENT CAN REACH MM 440.

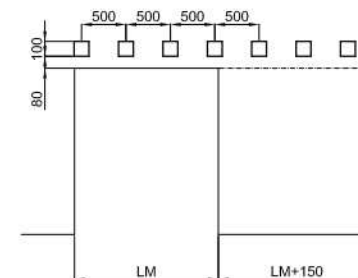
- Modular panels realised in galvanised, prepainted and welded sheet of steel, with high density insulating package inside.
- Upper strike beam equipped with guide and counterweight, which ensures closure in case of fire.
- Smoke and flame labyrinth on the perimeter of the leaf;
- Upper hoisting rail, low friction, complete of special supports to mount on architrave in reinforced concrete, metallic cover inspectable.
- Thermo-expanding gasket all around the door.
- Fixed handles for the opening.
- The sliding door has no floor guide, the alignment is maintained by a bottom wheel not visible. The sliding is sweet thanks to wheels with curve, mounted on double bearing.
- The particular construction method allows easy inspection of all mechanism.
- The doors are normally equipped with self-closing device through counterweight, driven by a thermal fuse (rated at 68 ° C).
- Superficial finish with primer colour RAL 7035 (brushed).
- The door is equipped with a final or continuous shock absorber according necessity.

Special Condition

Walled up stirrups

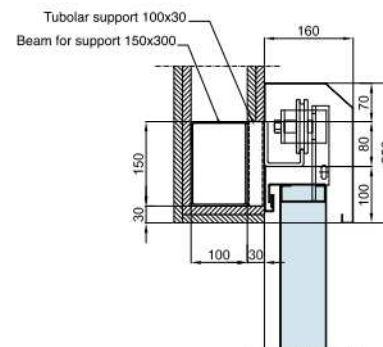


Installation on walls with a low mechanical strength

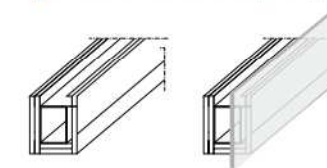


ATTN. For installation on flat ceiling or for sliding door with low height/width ration, please contact company

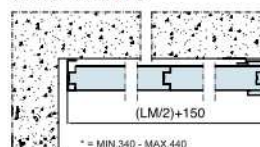
Beam for support



Gypsum cover at the customer's expense (*)

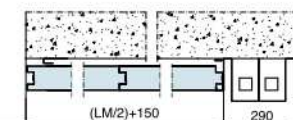


Counterweight WITH SAME LEAVES

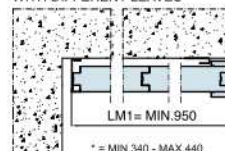


* = MIN.340 - MAX.440

sec.BB

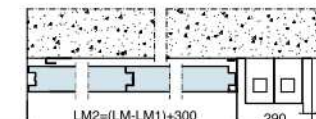


WITH DIFFERENT LEAVES



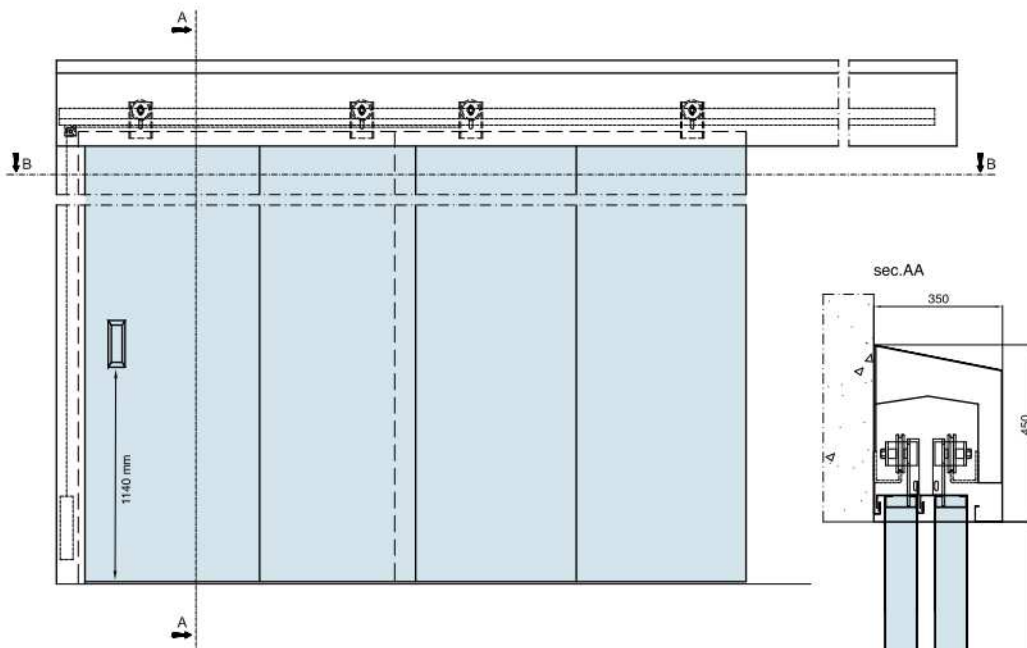
* = MIN.340 - MAX.440

sec.BB



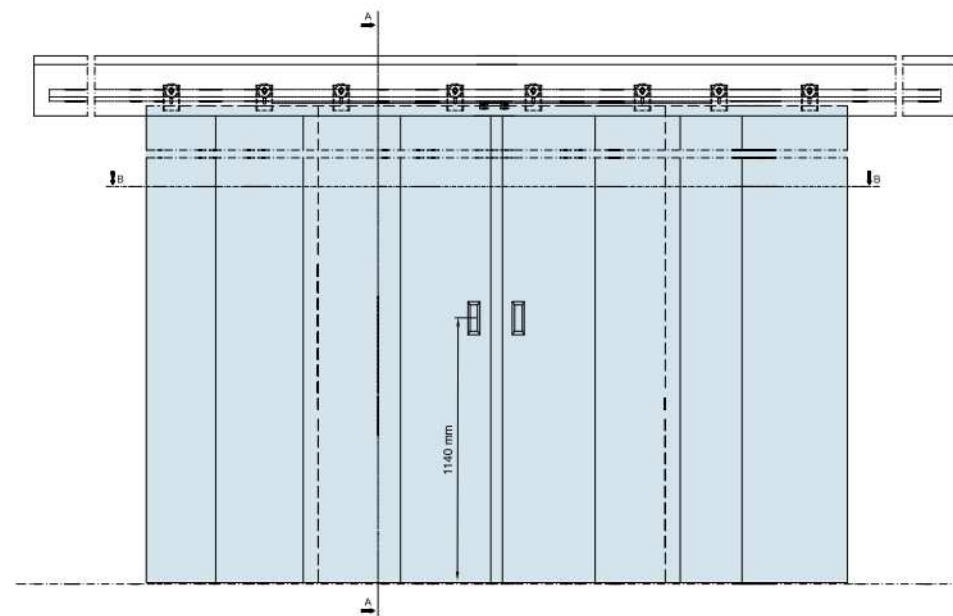
LM1= one leaf size
LM2= second leaf size

SLIDING Two leaves sliding one side REI 120

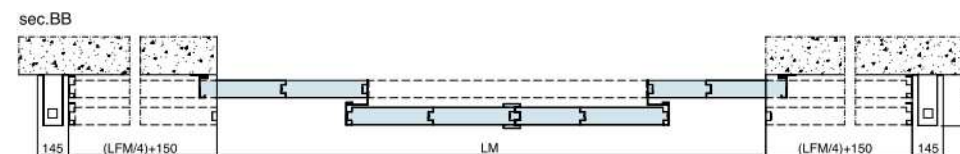


- Modular panels realised in galvanised, prepainted and welded sheet of steel, with high density insulating package inside.
- Upper strike beam equipped with guide and counterweight, which ensures closure in case of fire
- Smoke and flame labyrinth on the perimeter of the leaf.
- Upper hoisting rail, low friction, complete of special supports to mount on architrave in reinforced concrete, metallic cover inspectable.
- Thermo-expanding gasket all around the door.
- Fixed handles for the opening.

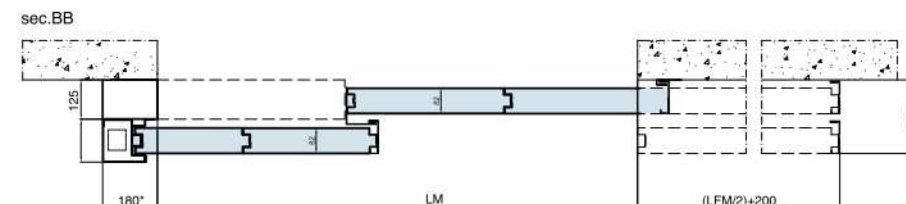
- The sliding door has no floor guide, the alignment is maintained by a bottom wheel not visible. The sliding is sweet thanks to wheels with curve, mounted on double bearing.
- The particular construction method allows easy inspection of all mechanism.
- The doors are normally equipped with self-closing device through counterweight, driven by a thermal fuse (rated at 68 ° C).
- Superficial finish with primer colour RAL 7035 (brushed).
- The door is equipped with a final or continuous shock absorber according necessity .



2+2 Leaves two sides

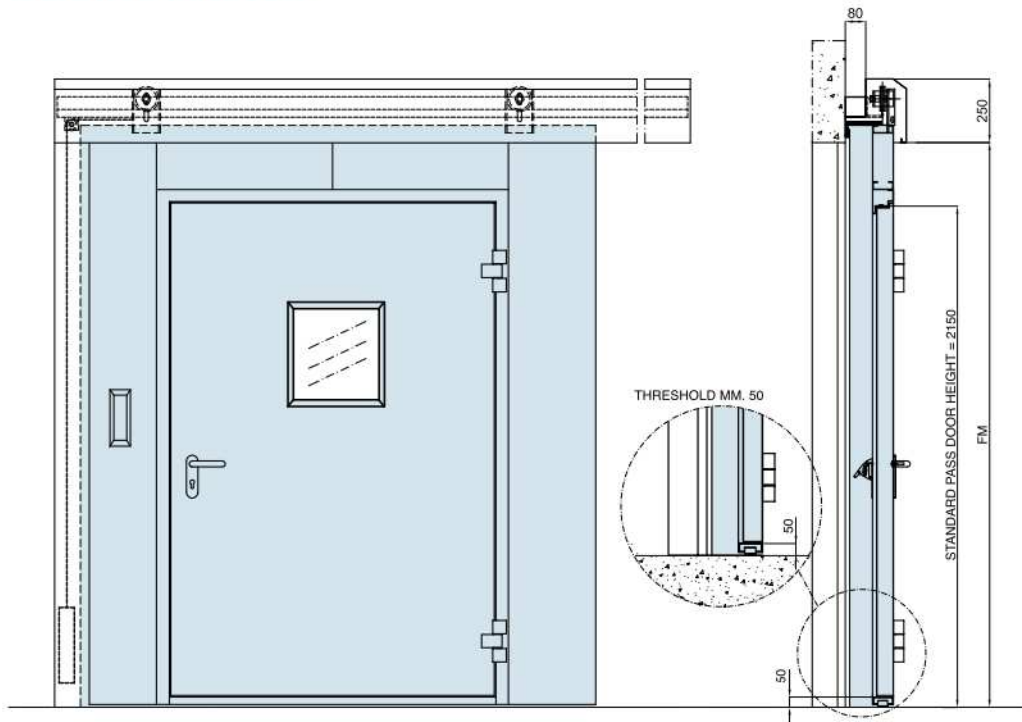


2 Leaves one side



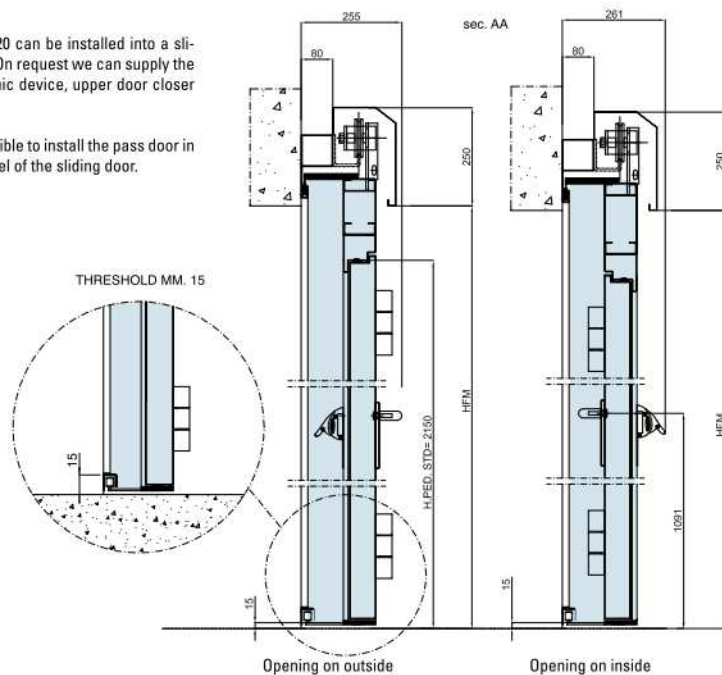
novoferm

SLIDING Pass door



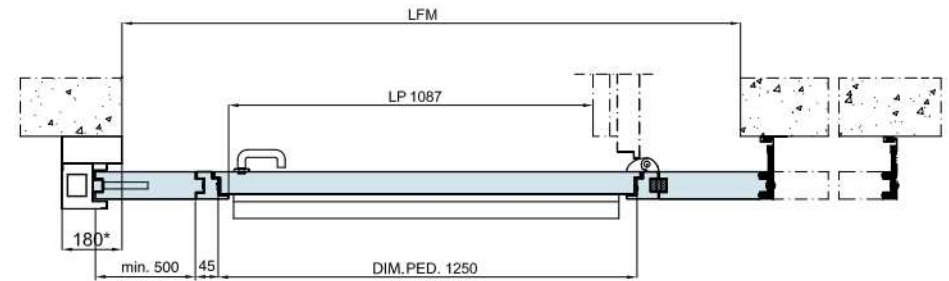
A pass door REI 120 can be installed into a sliding door REI 120. On request we can supply the pass door with panic device, upper door closer and window.

ATTN.: It's not possible to install the pass door in the first or last panel of the sliding door.

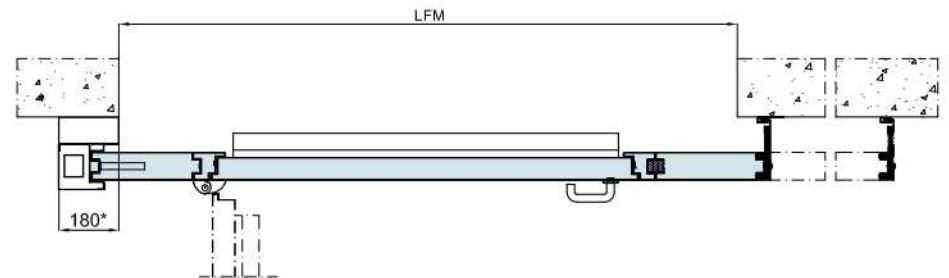


Special solution

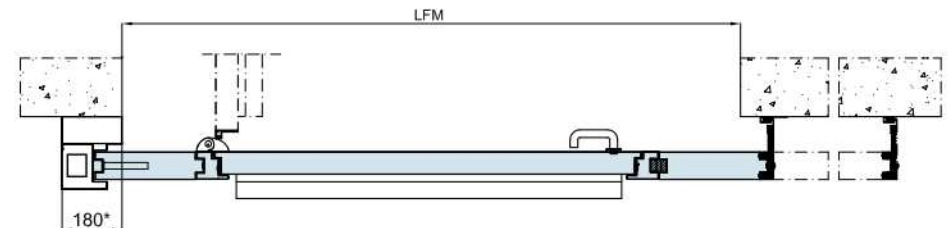
TYPE A (DXM) PASS DOOR DX WALL OPENING



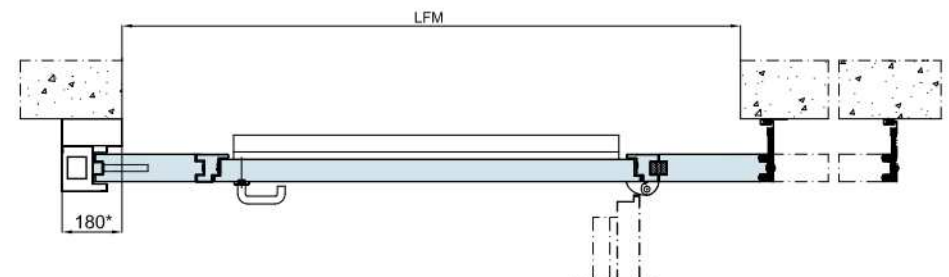
TYPE D (SXL) PASS DOOR DX LIGHT OPENING



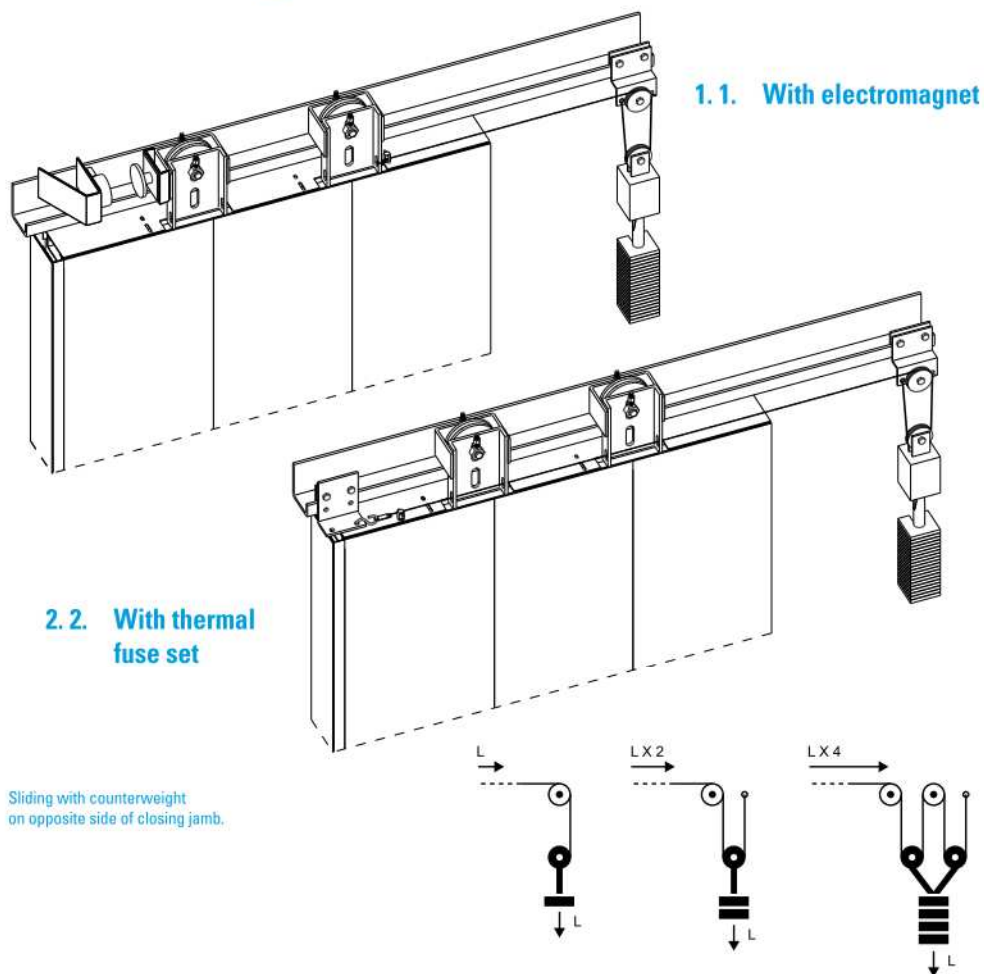
TYPE B (DXL) PASS DOOR SX WALL OPENING



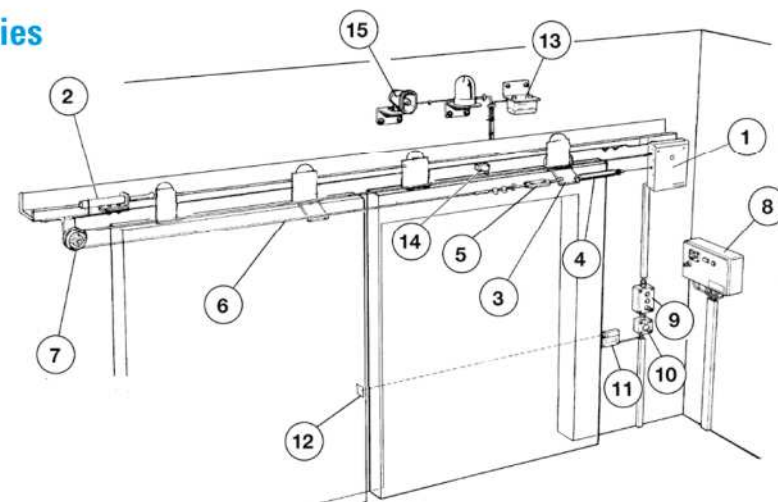
TYPE C (SXL) PASS DOOR SX LIGHT OPENING



SLIDING Working scheme



Accessories

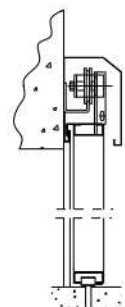


Motorization:

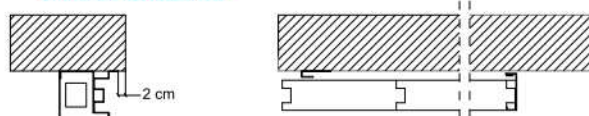
composed by a motor-gear triggered by electromagnet connected to the fire protection system, that in case of fire releases out of gear the door which close by counterweights. Suitable for areas with heavy traffic, opening is possible through remote control - Radar - foot pressure mat. Using the control panel you can manage some functions: delay in opening and closing, opening speed, security systems such as photocells, flashing.

The doors can be equipped with various accessories that improve functionality and safety. On request self-closing device can be constituted by an electromagnet managed by electronic sensor. This will increase drastically the sensibility and the time of reaction in case of fire.

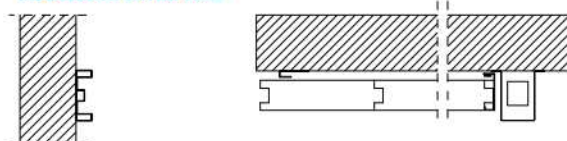
- | | |
|-------------------------------------------------|-------------------------|
| 1 Motor | 8 Control panel |
| 2 Final shock absorber | 9 Open and close button |
| 3 Cable connection | 10 Alarm button |
| 4 Spring for automatic cable tension adjustment | 11 Photoelectric cell |
| 5 Cable tensioner | 12 Mirror cell |
| 6 Traction cable | 13 Smoke releverator |
| 7 Pulley | 14 Final stroke contact |
| | 15 Horn |



STANDARD INSTALLATION

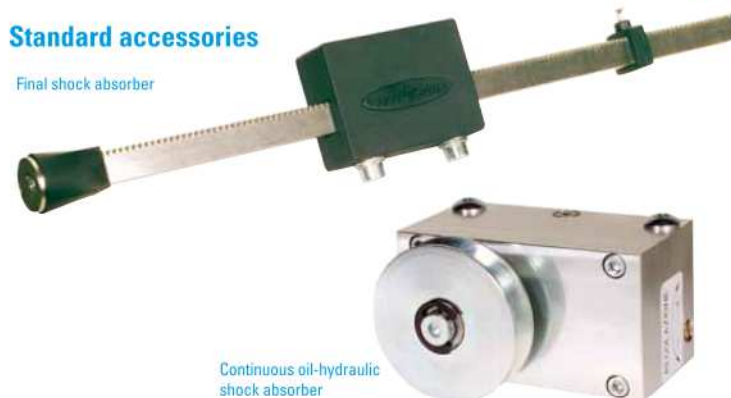


INSTALLATION ON FLAT WALL



Standard accessories

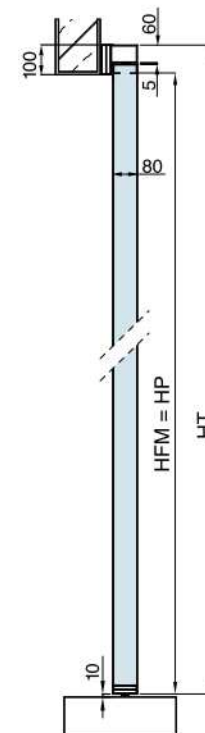
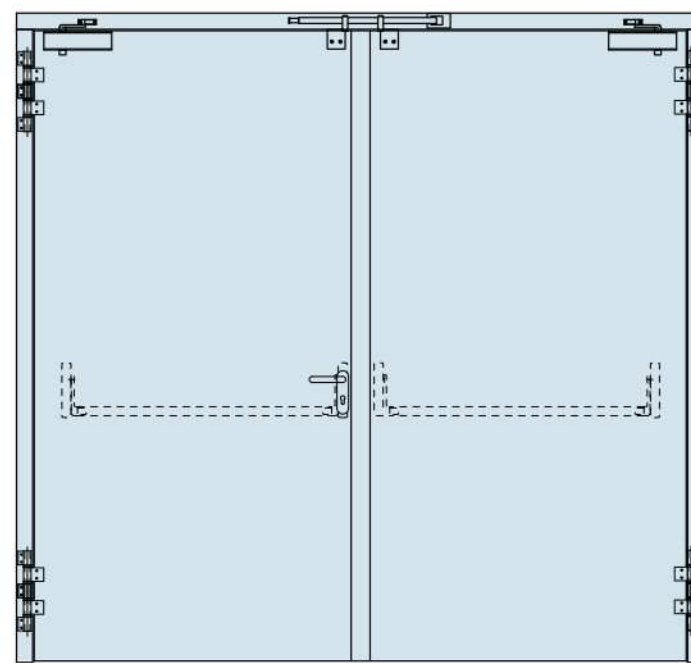
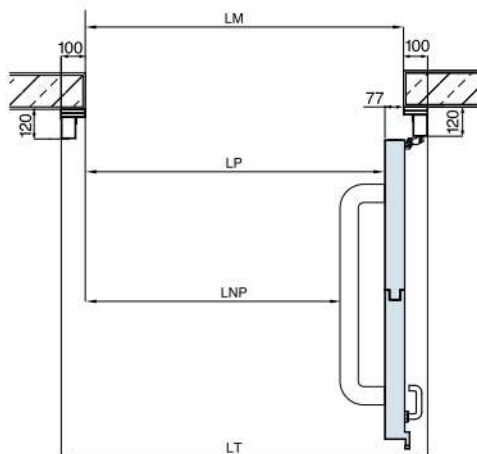
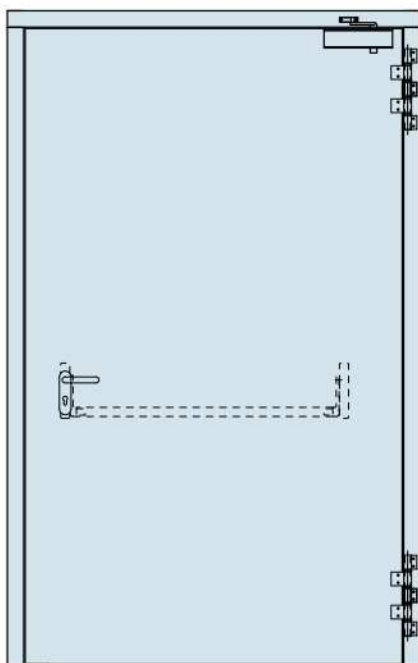
Final shock absorber



Continuous oil-hydraulic shock absorber

Continuous magnetic induction shock absorber

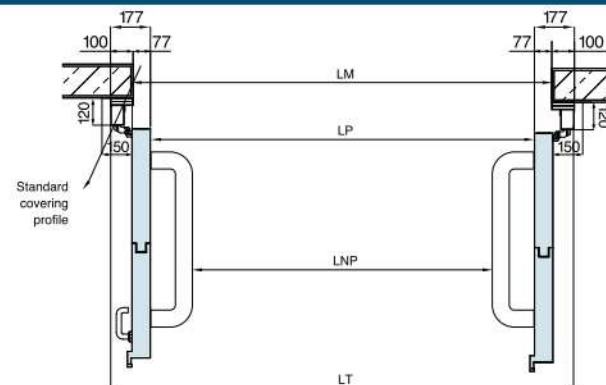
MAGNUM Big size door REI 120 «on the wall»



- MAGNUM door with one or two leaves.
- Modular panels in vertical elements (to mount on site) thickness mm.80, constituted by sheet 8/10 with high density insulated package inside.
- Frame in tubular steel 60x90, suitable for installing on the wall.
- Thermo-expanding gasket all around the door.
- Closing system by means of upper aerial pump and/or counterweight in case of big dimensions.

- Hinges with bearing, adjustable.
- Arm closing selector (included in double leaf door).
- Fire proof lock and cylinder with three keys.
- Lock type « flush-bolt » on secondary leaf.
- Black PVC handle.
- Superficial finish with primer colour RAL 7035 (brushed).

ATTN.: it's not possible to install novopush handle

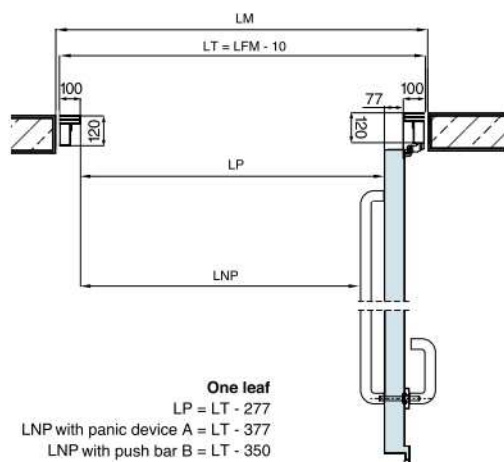
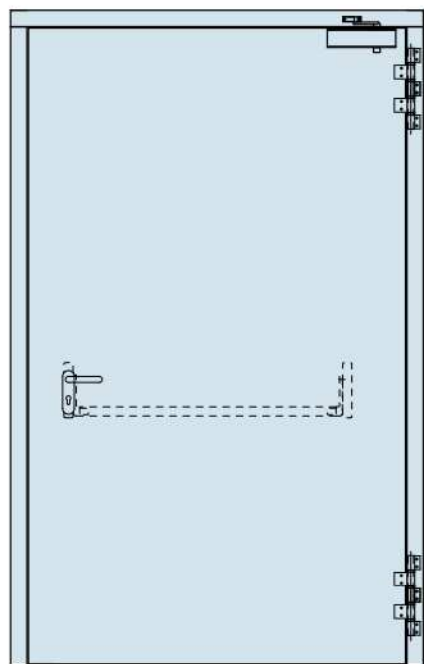


novoferm

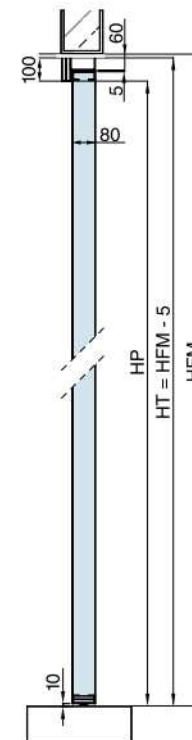
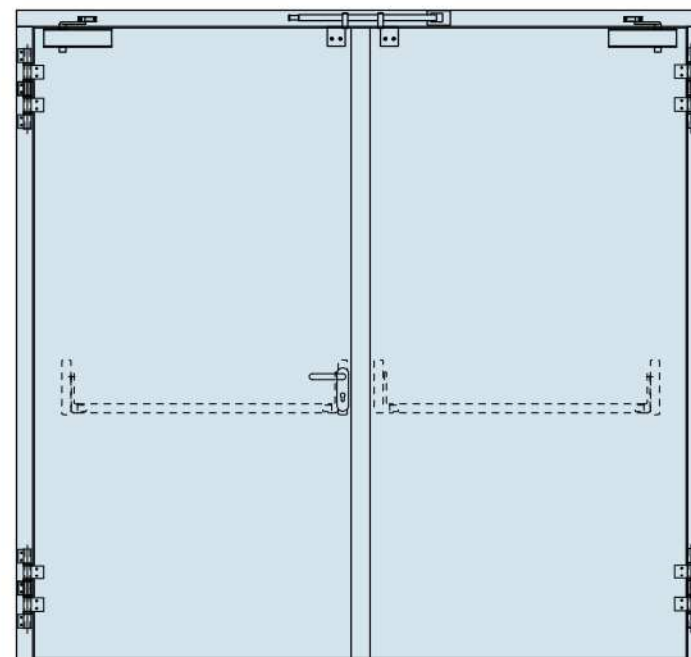
Two leaves

LP = LFM - 154
LNP with panic device A = LFM - 354
LNP with push bar B = LFM - 300

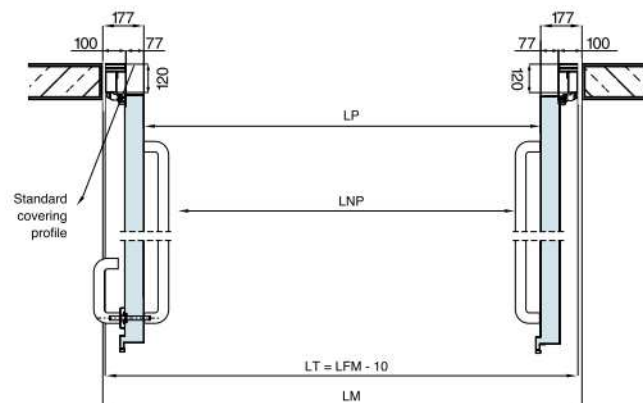
MAGNUM Big size door REI 120 «on block frame» (in the opening)



One leaf
 $LP = LT - 277$
 LNP with panic device A = $LT - 377$
 LNP with push bar B = $LT - 350$

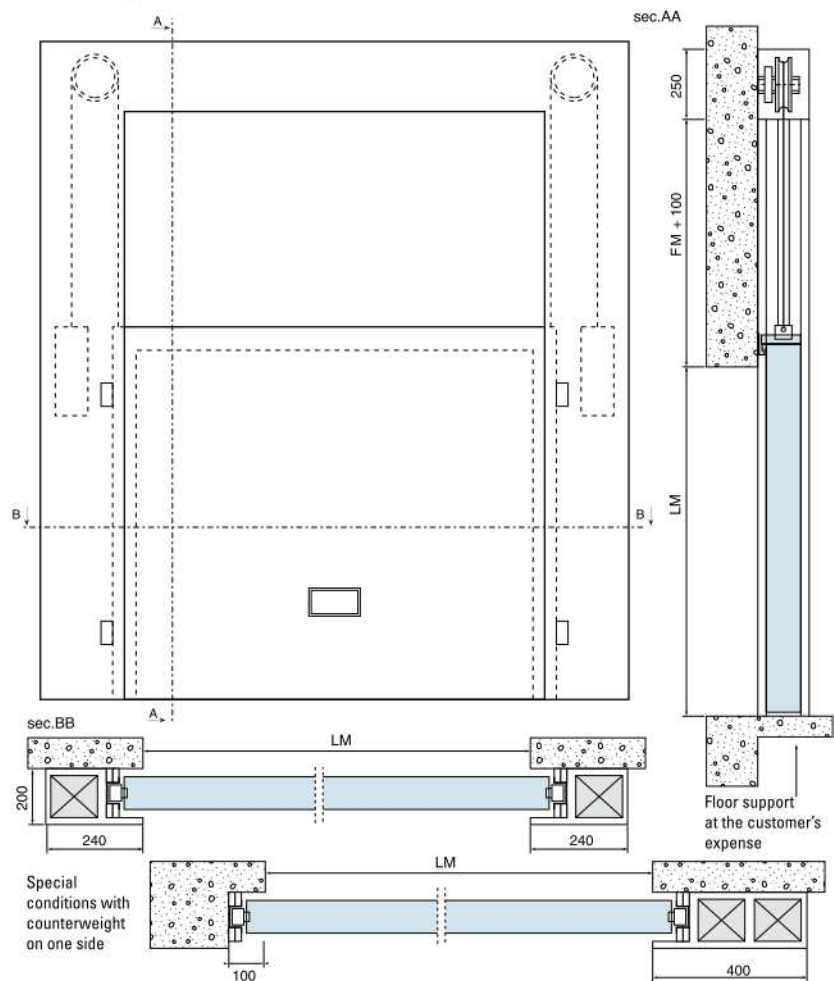


- MAGNUM door with one or two leaves.
- Modular panels in vertical elements (to mount on site) thickness mm.80, constituted by sheet mm. 8/10 with high density insulated package inside.
- Frame in tubular steel 60x90, suitable for installing in the opening.
- Thermo-expanding gasket all around the door.
- Closing system by means of upper aerial pump and/or counterweight in case of big dimensions.
- Hinges with bearing, adjustable.
- Arm closing selector (included in double leaf door).
- Fire proof lock and cylinder with three keys.
- Lock type « flush-bolt » on secondary leaf.
- Black PVC handle.
- Superficial finish with primer colour RAL 7035 (brushed).



Two leaves
 $LP = LFM - 154$
 LNP with panic device A = $LFM - 354$
 LNP with push bar B = $LFM - 300$

Vertical sliding door REI 120



- Movable panels realised in galvanised, prepainted and welded sheet of steel, with high density insulating package inside.
- Side guides and upper traverse box-shielded, complete of sliding guide, counterbalance, flame labyrinth, wheels on bearings in order to assure the sweet sliding.
- The automatic closing devices (inside the strike jamb) is composed by a weight controlled by a thermo-fuse.
- The door is equipped with a final shock absorber.
- Thermo-expanding gasket all around the door.
- Superficial finish with primer colour RAL 7035 (brushed).
- Possibility to connect to detection and control fire system by electromagnet.

novoferm

ORDER FORM

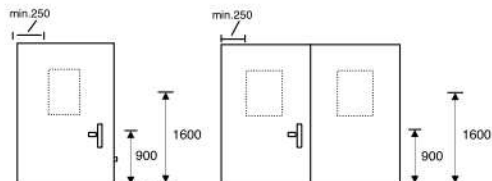
ELITE BLIND DOOR

ELITE BLIND DOOR

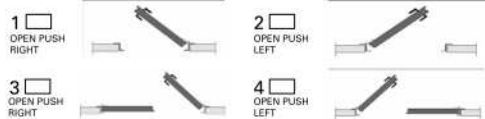
☐ REI 60 ☐ REI 90 ☐ REI 120 ☐ METAL

☐ 1 LEAF
Min. 500 x 1750
Max. 1350 x 2640

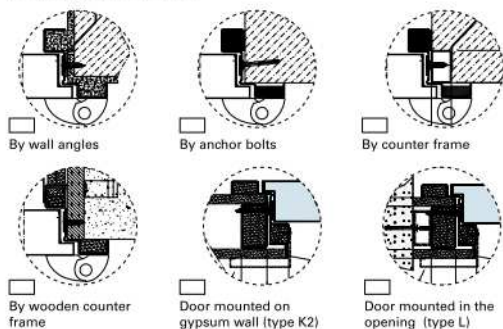
☐ 2 LEAVES
Min. 800 x 1750
Max. 2680 x 2640



Type of opening



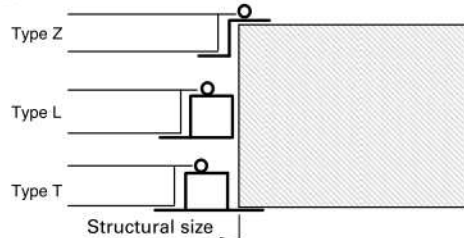
MOUNTING SYSTEM



Glazing windows: ☐ Active leaf ☐ Passive leaf

☐ 300 x 400 ☐ 400 x 600 ☐ Ø 300 ☐ Ø 500

Type of installation on the wall (Z - L - T)



☐ Right, type installation
☐ Left, type installation



DATE
COMPANY
PAG. OF

STRUCTURAL WALL SIZE

L x H (mm) X

☐ 1 LEAF ☐ 2 LEAVES

If 2 Leaves

☐ Symmetric ☐ Active leaf mm

Doors Qty:

FINISHING

☐ RAL Powder coating for inside (brushed)
☐ RAL Powder coating for outside
☐ RAL frame
☐ Wood Covering
☐ Stainless steel
☐ Laminate Covering Abet

ACCESSORIES

☐ Electrical strike, Art / Qty
☐ Electrical lock, Art / Qty
☐ Smoke detector, Art / Qty
☐ Elettromagnets, Art / Qty
☐ Doorcloser, Art / Qty
☐ Wall covering profile, wall thickness
☐ standard ☐ on request

HANDLES

☐ PVC Black handle, steel amour
☐ PVC color handles, steel amour RAL
☐ Stainless steel satin handle
☐ Knob, side
Electric handle ☐ A/C ☐ D/C

PANIC DEVICE type

☐ MACM ☐ MAC ☐ MAM ☐ MA ☐ MA

☐ Drawings attached

NOTE

ORDER FORM

FIRE PROOF SLIDING DOORS



MINIMUM ORDER VALUE

MQ

Tipo 1, 3 1 leaf one side (std) 4
Tipo 2, 4 1 leaf one side (special) 4
Tipo 5 2 leaves two sides 5
Tipo 6, 7 2 leaves one side 5
Tipo 8 2+2 leaves two sides 5
Tipo 9, 10 2+1 leaves two sides 5

CLOSING SYSTEM

☐ Wall Elettromagnet, Kg..... / Qty
☐ Thermofuse
☐ Emergency push-bottom
☐ Hook night lock

PASS DOOR

☐ Pass door with bottom threshold 15 mm
☐ Pass door with bottom threshold 50 mm
☐ Window size mm 300x40
☐ Panic device type.....
Opening ☐ DxL ☐ DxM ☐ SxL ☐ SxM

FINISHING

☐ RAL..... Powder coating for inside
☐ Stainless steel
☐ Standard RAL 7035

ACCESSORY AND CARPENTRY

☐ Tubular beam section mm.....
☐ Vertical support mm..... / Qty
☐ Fixing plates to mount (not constant wall)
☐ Thickness for sliding doors mm.....
☐
☐

ELECTRIC OPERATOR

☐ **Type D3700**
if L>H max. mq 16, if L<H max. mq 13
☐ **Type D5700**
if L>H max. mq 25, if L<H max. mq 20

☐ Drawings attached

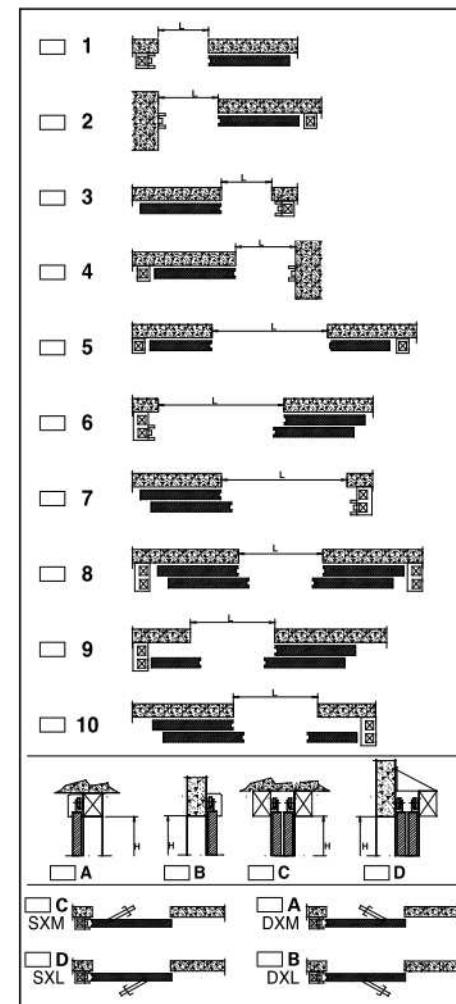
NOTE

STRUCTURAL WALL SIZE

Type:

L x H (mm) x

Doors Qty:



ORDER FORM

FIRE PROOF GLAZED DOORS



GLAZED DOORS WITH OR WITHOUT HORIZONTAL FRAME

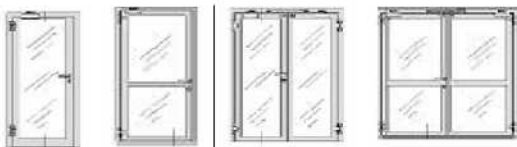
- ☐ 1 LEAF
Min. 500 x 1750
Max. 1460 x 2058
- ☐ 2 LEAVES
Min. 800 x 1750
Max. on request

STAHLGLASS

- ☐ REI 30
☐ REI 60
☐ RE 120

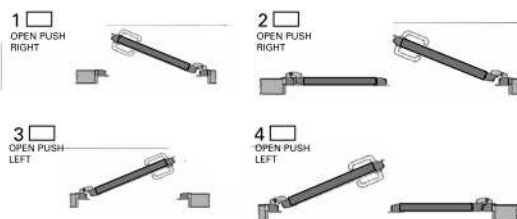
NOVOGLASS

- ☐ REI 30
☐ REI 60
☐ REI 120



- ☐ Without horizontal frame
☐ Horizontal frame
- ☐ Without horizontal frame
☐ Horizontal frame

Type of opening

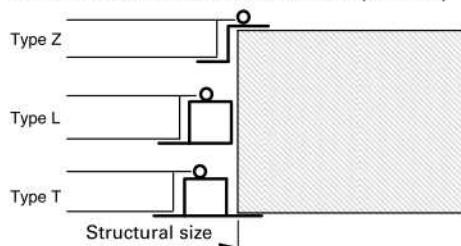


- ☐ Glazing beads, push side
☐ Glazing beads, pull side

MOUNTING SYSTEM

- ☐ Pre frame ☐ Concrete (Without preframe)

TYPE OF INSTALLATION ON THE WALL (Z - L - T)



- ☐ Right, type installation
☐ Left, type installation
☐ Height, type installation

DATE
COMPANY
PAG. OF

STRUCTURAL WALL SIZE

L x H (mm) X

- ☐ 1 LEAF ☐ 2 LEAVES

If 2 leaves

- ☐ Symmetric
☐ First leaf mm

Doors Qty:

SPECIAL GLAZING DOORS

- ☐ Outside filterglass
☐ Glass with sand effect

FINISHING AND SPECIAL

- ☐ RAL Powder coating for inside
☐ RAL Powder coating for outside
☐ Stainless steel

ACCESSORIES

- ☐ Electrical strike, Art / Q.tà
☐ Smoke detector, Art / Q.tà
☐ Elettromagnets, Art / Q.tà
☐ Wall covering profile, wall thickness
☐ standard ☐ on request

HANDLES

- ☐ PVC black handle, steel armour
☐ PVC colored handles, steel armour, RAL.....
☐ Stainless steel satin handle
☐ Knob, side
Electric handle ☐ A/C ☐ D/C

PANIC DEVICES type

- ☐ MACM ☐ MAC ☐ MAM ☐ MA ☐ MA

- ☐ Drawing attached

NOTE

ORDER FORM

FIRE PROOF COMPLEX GLAZED DOORS



COMPLEX GLAZED DOORS

- ☐ 1 LEAF
Min. 500 x 1750
Max. on request
- ☐ 2 LEAVES
Min. 800 x 1750
Max. on request

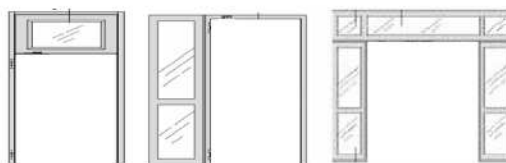
STAHLGLASS

- ☐ REI 30
☐ REI 60
☐ RE 120 (only with horizontal frame)

NOVOGLASS

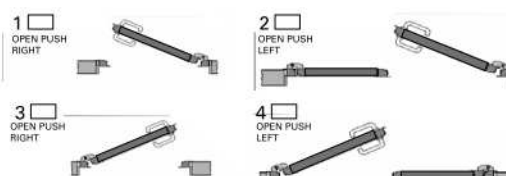
- ☐ REI 30
☐ REI 60

- ☐ Horizontal frame ☐ Without horizontal frame



- ☐ Top panel
☐ Side panel
☐ DX ☐ SX (external view)
☐ Top panel, one or more side panels
N° Side panel:
☐ DX ☐ SX (external view)

Type of opening

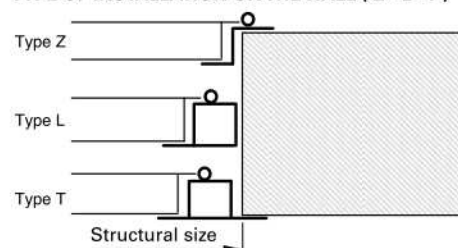


- ☐ Glazing beads, push side
☐ Glazing beads, pull side

MOUNTING SYSTEM

- ☐ Pre frame ☐ Concrete (Without preframe)

TYPE OF INSTALLATION ON THE WALL (Z - L - T)



- ☐ Right, type installation
☐ Left, type installation
☐ Height, type installation

DATE
COMPANY
PAG. OF

STRUCTURAL WALL SIZE

L x H (mm) X

Light passage width mm

Frame width tot.

If 2 leaves

- ☐ Symmetric
☐ First leaf mm

Doors Qty:

SPECIAL GLAZED DOORS

- ☐ Outside filterglass
☐ Glass with sand effect

FINISHING AND SPECIAL

- ☐ RAL Powder coating for inside
☐ RAL Powder coating for outside
☐ Stainless steel

ACCESSORIES

- ☐ Electrical strike, Art / Q.tà
☐ Smoke detector, Art / Q.tà
☐ Elettromagnets, Art / Q.tà
☐ Wall covering profile, wall thickness
☐ Standard ☐ On request

HANDLES

- ☐ PVC black handle, steel armour
☐ PVC colored handles, steel armour, RAL.....
☐ Stainless steel satin handle
☐ Knob, side
Electric handle ☐ A/C ☐ D/C

PANIC DEVICE type

- ☐ MACM ☐ MAC ☐ MAM ☐ MA ☐ MA

- ☐ Drawing attached

NOTE

